

Photoswitchable Endocytosis of Biomolecular Condensates in Giant Vesicles

Agustín Mangiarotti, Mina Aleksanyan, Macarena Siri, Tsu-Wang Sun, Reinhard Lipowsky, and Rumiana Dimova*

Interactions between membranes and biomolecular condensates can give rise to complex phenomena such as wetting transitions, mutual remodeling, and endocytosis. In this study, light-triggered manipulation of condensate engulfment is demonstrated using giant vesicles containing photoswitchable lipids. UV irradiation increases the membrane area, which can be stored in nanotubes. When in contact with a condensate droplet, the UV light triggers rapid condensate endocytosis, which can be reverted by blue light. The affinity of the protein-rich condensates to the membrane and the reversibility of the engulfment processes is quantified from confocal microscopy images. The degree of photo-induced engulfment, whether partial or complete, depends on the vesicle excess area and the relative sizes of vesicles and condensates. Theoretical estimates suggest that utilizing the light-induced excess area to increase the vesicle-condensate adhesion interface is energetically more favorable than the energy gain from folding the membrane into invaginations and tubes. The overall findings demonstrate that membrane-condensate interactions can be easily and quickly modulated via light, providing a versatile system for building platforms to control cellular events and design intelligent drug delivery systems for cell repair.

within the cytoplasm or nucleus of a cell.^[1] They are involved in a wide range of cellular processes including gene transcription and translation,^[2] signal transduction,^[3] stress response,^[4] protein quality control,^[5] and cell division.^[6] Lately, condensate-membrane interactions have been shown to be crucial for the formation of tight junctions,^[7] transport of stress granules,^[8] stabilization of membrane damage by stress granules,^[9] signal transduction in T-cells,^[3] and endocytosis.^[10] The associated morphologies are governed by membrane-wetting transitions^[11] that can be tuned via changes in the salinity of the milieu or the membrane composition.^[11,12] In vitro studies have demonstrated that condensate endocytosis can occur when sufficient membrane area is available.^[11,12] Furthermore, coacervates of various compositions can be completely engulfed by lipid vesicles by altering the membrane charge and increasing the strength of droplet-membrane interaction.^[12] This compartmentalization provided by condensate-membrane

1. Introduction

Biomolecular condensates are specialized, membraneless cellular compartments formed through the dynamic and reversible assembly of proteins, nucleic acids, and other biomacromolecules

assemblies is crucial for cell function, highlighting the roles of condensates and their potential applications in artificial cells and biomolecular transport across membranes.^[13] Recent studies have demonstrated the potential of complex coacervates, composed of oligo-arginine and RNA, to penetrate phospholipid bilayers and enter liposomes,^[14] suggesting their utility for therapeutic purposes in biotechnology by serving as effective drug delivery platforms in living cells. The burgeoning field of synthetic cell construction, with a focus on coacervate droplets as both membrane-free compartments and crowded cytosol-like environments, is already demonstrating their potential applications in assembling integrated synthetic cells capable of mimicking various life-inspired functions.^[15]

Introducing biocompatible molecular photoswitches into such bio-systems provides additional leverage for fast and reversible manipulation of cellular processes through light.^[16] Here, we construct a photoswitchable biomimetic system for condensate endocytosis using giant unilamellar vesicles (GUVs) and glycinin protein condensates.

Giant vesicles are cell-sized, biomembrane compartments with an increasingly broad spectrum of applications.^[17] UV exposure of GUVs composed of 1-palmitoyl-2-oleoyl-glycerol-3-phosphocholine (POPC) and photoswitchable azobenzene

A. Mangiarotti, M. Aleksanyan, M. Siri, T.-W. Sun, R. Lipowsky, R. Dimova
Max Planck Institute of Colloids and Interfaces
Science Park Golm, 14476 Potsdam, Germany
E-mail: rumiana.dimova@mpikg.mpg.de

M. Aleksanyan
Institute for Chemistry and Biochemistry
Free University of Berlin
Takustraße 3, 14195 Berlin, Germany

M. Siri
Max Planck Queensland Centre
Science Park Golm, 14476 Potsdam, Germany

 The ORCID identification number(s) for the author(s) of this article can be found under <https://doi.org/10.1002/advs.202309864>

© 2024 The Authors. Advanced Science published by Wiley-VCH GmbH. This is an open access article under the terms of the [Creative Commons Attribution](https://creativecommons.org/licenses/by/4.0/) License, which permits use, distribution and reproduction in any medium, provided the original work is properly cited.

DOI: 10.1002/advs.202309864

phospholipid analog (azo-PC) can trigger a reversible increase in membrane area upon *trans*-to-*cis* isomerization.^[18] Azo-PC is a commercially available photolipid with a well-characterized synthetic route.^[19] The effects of light on the material and electrical properties of azo-PC-containing GUVs have been already extensively characterized.^[18–20] The precise membrane area increase resulting from the isomerization of azo-PC has recently been measured from GUV electrodeformation and the results were found consistent with molecular dynamics simulations.^[18]

Glycinin is a storage protein from the soybean that constitutes a robust model for protein condensation^[21] with well-characterized phase diagrams at different conditions.^[21] Membrane wetting of this protein and other condensate systems have been shown to lead to remodeling events^[11,22] and changes in membrane lipid packing and hydration.^[23]

Recently, Lu et al.^[12] provided evidence of the engulfment of complex coacervates into GUVs by modulating the charges of the membrane and the condensates. However, in this approach, endocytosis relies on the available access area of the GUVs, presumably achieved via deflation, which is a slow passive process that can take even up to an hour.^[12] In contrast, manipulating the vesicle excess area with light offers control, faster response, and reversibility.^[16] Here, we employed azo-PC containing GUVs and glycinin condensates to provide a versatile, biocompatible and fast platform for tuning condensate-membrane interactions via light. To our knowledge, this is the first study demonstrating that light can finely manipulate protein-lipid interactions, leading to the endocytosis of protein condensates in an instantaneous and reversible manner. By carefully characterizing the light-triggered endocytosis of condensates, we aimed to propose promising, bio-inspired, and simple photolipid-doped cell models and liposomal drug carriers, offering potential therapeutic applications for addressing cellular disorders.

2. Results and Discussion

2.1. Reversible Partial and Complete Engulfment of Protein Condensates Under the Influence of Light

When the photoswitchable azo-PC lipids are exposed to UV-light (365 nm), *trans*-to-*cis* photo-isomerization occurs^[24] (Figure 1a), which effectively increases the area per molecule and the total vesicle area accordingly^[18] (Figure 1b). Photoisomerization in membranes containing 50 mol% azo-PC results in a substantial area increase of ~18%.^[18] We prepared POPC:azo-PC (1:1 molar ratio) GUVs labeled with 0.1 mol% ATTO-647N-DOPE and observed them with confocal microscopy. Under UV light, the GUVs grow in size and the generated excess membrane area quickly transforms into internal nanotubes (Figure 1b,c). This process can be reversed by blue irradiation (450 nm), Movie S1 (Supporting Information). The formation of nanotubes is caused by the buffer asymmetry across the GUV membrane (sucrose solution inside and isotonic sodium chloride solution outside) resulting in high negative spontaneous curvature stabilizing the tubes.^[25] The sodium chloride solution was required for condensate formation (see the Experimental section for details), while the internal sucrose solution osmotically stabilizes the GUV ensuring volume conservation.

To probe whether condensate-membrane interactions can be tuned by light, we placed the vesicles in contact with glycinin condensates formed at 150 mM NaCl and labeled with the water-soluble dye Sulforhodamine B (SRB). Upon adhesion, the condensates deform the GUV membrane (Figure 2), as previously shown.^[11] Under UV irradiation, the *trans*-to-*cis* photoisomerization of azo-PC results in fast membrane expansion accompanied by increasing adhesion zone. We observed two outcomes depending on the relative sizes of the interacting vesicle and condensate (Figure 2). For larger condensates, with a radius (R_{cond}) comparable to or exceeding the vesicle radius (R_{GUV}), the generated excess membrane is consumed to partially engulf the droplet, see Figure 2a,b, and Movie S2 (Supporting Information). For smaller condensates ($R_{GUV} \gg R_{cond}$), the UV-induced excess area of the GUV allows complete engulfment, i.e. endocytosis of the condensate (Figure 2c,d and Movie S3, Supporting Information). Images of the membrane channel and the 3D projection show that the condensate is fully enclosed by the membrane, confirming endocytosis (Figure S1, Supporting Information). Note that to allow reversibility of endocytosis, the membrane adhering to the droplet must be connected to the mother vesicle by a closed (nanometric) membrane neck.^[26] This membrane neck can be subsequently cleaved via scaffolding proteins^[27,28] or low density of membrane-bound proteins inducing large spontaneous curvature that generates a constriction force.^[29]

In addition, a single GUV can engulf multiple condensates, as shown in Figure S2a (Supporting Information). However, this case requires more available membrane area, and the adhesion of multiple condensates might increase the membrane tension,^[12,30] reducing the likelihood of the engulfment of many droplets.

As shown in Figure 2, both, the complete and partial engulfment processes can be quickly reversed by blue light exposure, see Figures S2–S4 and Movies S4–S8 (Supporting Information) for more examples including large-field images. We emphasize that the protein structure remains unaltered after UV irradiation as demonstrated by Fourier-transform infrared spectroscopy (Figure S5, Table S1 in Supporting Information, and Experimental section), indicating that the observed changes in membrane-condensate affinity are solely due to the light-induced changes in the membrane. We also conducted control experiments involving the exposure of pure POPC GUVs to UV and blue light irradiation for similar or longer durations and monitored their interactions with glycinin condensates under UV and blue light (Figure S6, Supporting Information). The applied irradiation conditions did not lead to any changes in the membrane response or GUV morphology (Figure S6a–d, Supporting Information), as previously demonstrated.^[18] Additionally, they did not induce any alterations in the protein-lipid interactions (Figure S6e–h, Supporting Information).

2.2. Quantifying the Condensate Affinity to the Membrane From the System Geometry

In the case of the partial engulfment of condensates by GUVs, the contact angle between the membrane and the condensate (Figure 2a,b) changes, suggesting altered affinity. Note that

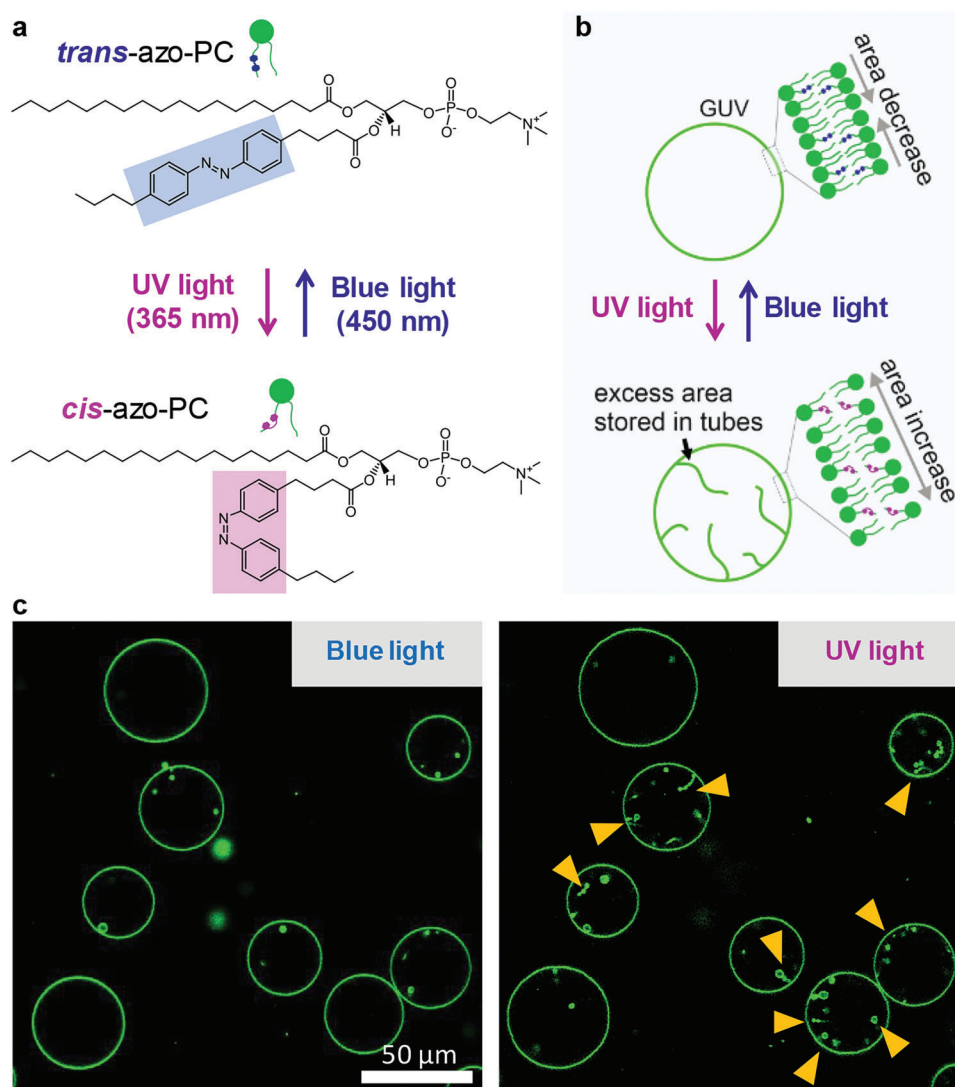


Figure 1. Irradiation of membranes doped with photoswitchable azo-PC causes reversible area increase and morphological changes in GUVs. a) Molecular structures of *cis* and *trans* azo-PC photoswitchable isomers. b) Schematic illustration of the reversible membrane area changes in GUVs under UV and blue light. The excess area generated under UV irradiation can be stored in nanotubes. c) Confocal cross-sections showing membrane area change of POPC:azo-PC (1:1) GUVs labeled with 0.1 mol% Atto-647N-DOPE upon *trans*-*cis* photoisomerization and extensive nanotube formation in the GUV lumen (arrowheads); the right image shows the vesicle response after 1 s of UV light irradiation, Movie S1 (Supporting Information).

measuring only this apparent contact angle may provide an inaccurate understanding of the interaction. Assessing it solely from confocal cross-sections where either the condensate center or the vesicle centers are not in the plane of the image (out of focus) results in an incorrect system geometry description.^[11] To obtain accurate information, it is crucial that the rotational axis of symmetry of the vesicle-droplet system lies in the image plane of the projected image. This often necessitates the acquisition and reorientation of a 3D image of the vesicle and droplet., see e.g.^[11]

The changes in the affinity of the condensate to the membrane can be precisely quantified by measuring the geometric factor $\Phi = (\sin \theta_e - \sin \theta_c) / \sin \theta_i$, which is obtained from the apparent (measured by light microscopy) contact angles facing the external phase, θ_e , the vesicle lumen, θ_i , and the condensate interior, θ_c . Note that while the membrane shape appears to have a kink at the

three-phase contact line, the detailed structure of this kink corresponds to a highly curved membrane segment that is resolvable only with super-resolution microscopy.^[31]

The geometric factor is a dimensionless quantity reflecting the tensions in the system, namely the interfacial tension Σ_{ce} and the two mechanical tensions of the membrane segments in contact with the external phase, Σ_{ic}^m , and with the condensate, Σ_{ic}^m (see details in Figure 3a). It can adopt values between -1, corresponding to complete wetting and spreading of the condensate on the membrane surface, and 1 corresponding to no wetting where both vesicles and condensate remain spherical. The intermediate values, $-1 < \Phi < 1$, reflect the case of partial wetting. While the contact angles reflect the specific geometry of a vesicle-condensate couple and can exhibit broad variations in the sample, the geometric factor is a material property of

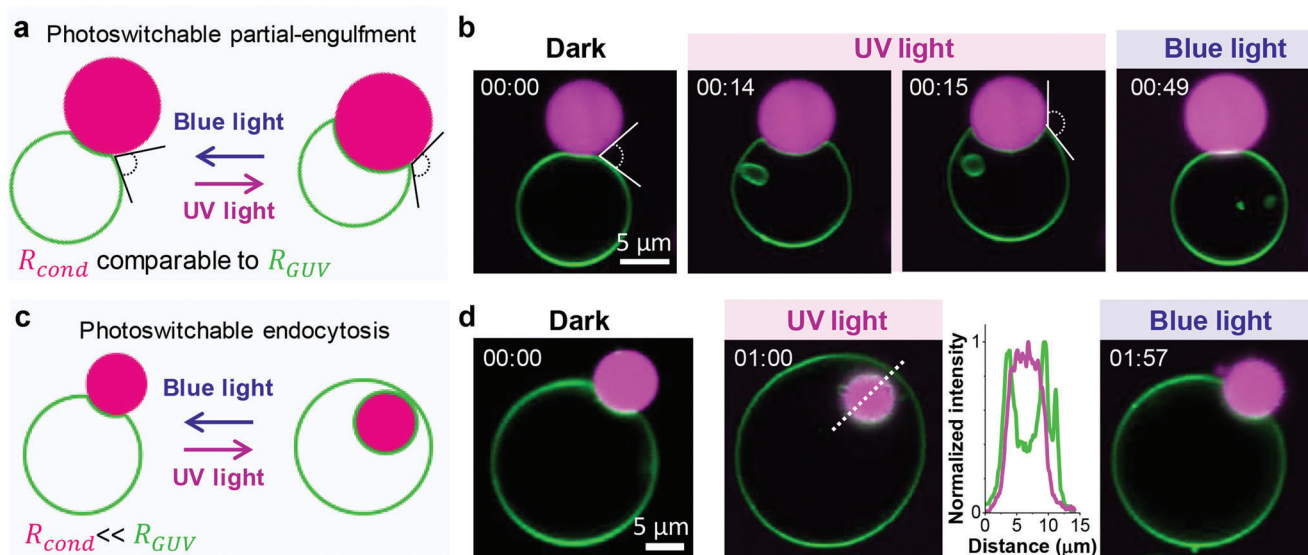


Figure 2. Light-induced engulfment of condensates. a,b) Condensates with sizes comparable to that of the GUV experience reversible partial engulfment (schematic and confocal cross-sections) mediated by UV/blue irradiation. The time stamps (mm:ss) correspond to the time after starting the recording; the UV light was switched on at 14 s and changed to blue light at 49 s (Movie S2 Supporting Information for time-lapse recording of this GUV-condensate couple). The contact angle between the condensate and the membrane changes upon photoisomerization as highlighted. c,d) For smaller condensates, photoisomerization leading to sufficient excess area leads to complete engulfment, which is reversible; the UV light was switched on at 6 s and changed to blue light at 1 min 47 s (Movie S3, Supporting Information). The intensity profile corresponds to the white dashed line shown in the second image in d) showing the position of the condensate (magenta) wrapped by the membrane (green).

the condensate-membrane system.^[11] It has been theoretically derived^[26,32] (as reviewed^[30]) and supported by experimental data on condensate-vesicle systems.^[11,22,31] Indeed, because the geometric factor is a material property, it is constant over the whole population of vesicle-condensate pairs. It reflects the wet-

ting affinity and is independent of condensate-vesicle geometry as well as droplet and vesicle sizes and vesicle excess area.^[11]

Figure 3b shows that the geometric factor for pure POPC and POPC:azo-PC membranes in the *trans* state are similar, but *trans*-to-*cis* photo-isomerization alters it. The data indicate that the

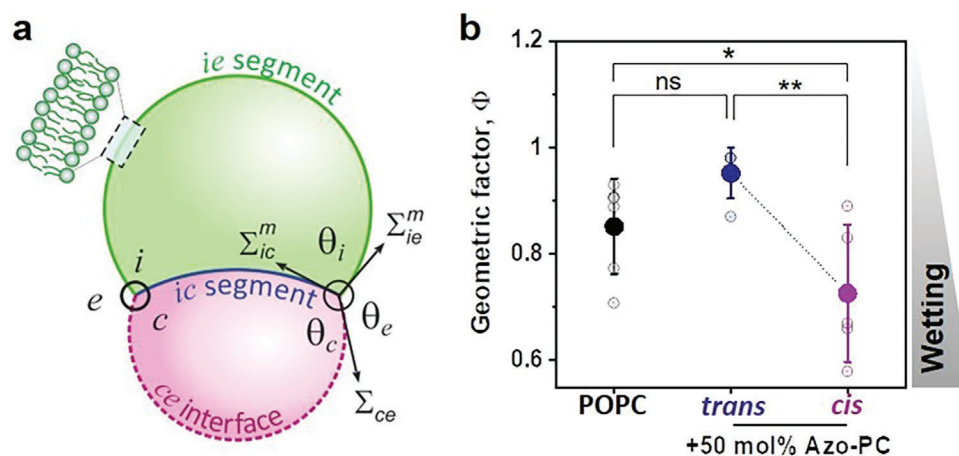


Figure 3. System geometry and contact angles used to determine the geometric factor, which shows increased wetting affinity upon *trans*-to-*cis* isomerization. a) For partial wetting morphologies of condensate-membrane systems, the contact interface between the condensate (magenta) and the membrane (green) partitions the membrane into the *ie* and *ic* segments, with the contact angles $\theta_i + \theta_e + \theta_c = 360^\circ$. The interfacial tension Σ_{ce} and the mechanical tensions Σ_{ic}^m and Σ_{ie}^m within the two membrane segments are balanced, see.^[11,30] b) Experimental data for the geometric factor $\Phi = (\sin \theta_e - \sin \theta_c) / \sin \theta_i$ for pure POPC GUVs or POPC:azo-PC 1:1 GUVs in contact with glycinin condensates at 150 mM NaCl. Individual values are shown as open circles and the solid symbols and lines indicate the mean and standard deviation, $n = 5$ per condition. The geometric factor reaches the maximum value of $\Phi = +1$ for complete dewetting (no interaction between the condensate and the vesicle) and partial wetting for lower values. The drop in Φ for the *trans*-to-*cis* isomerization of the azo-PC lipids indicates that the affinity between the condensates and the membrane is increasing. The vesicle-condensate couples were irradiated with UV light for 15 s before imaging for contact angle measurement. The statistical analysis was performed with One-way ANOVA and Tukey post-test analysis ($p < 0.0001$, **** | $p < 0.001$, *** | $p < 0.01$, ** | $p < 0.05$, * | ns = non-significant).

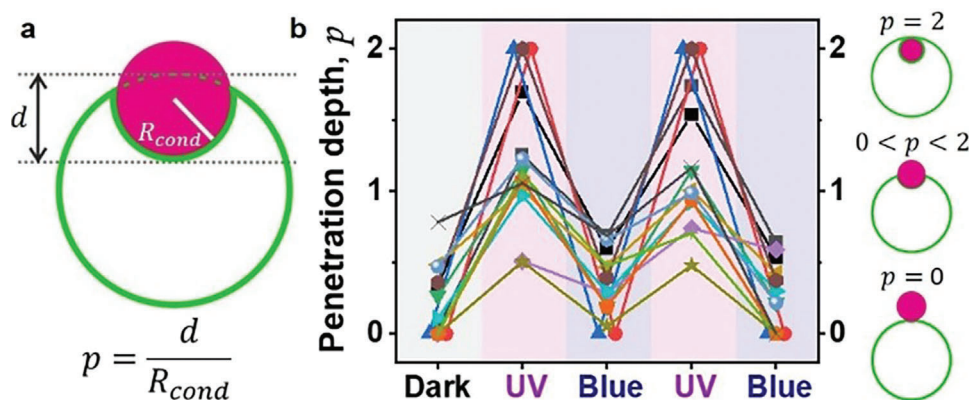


Figure 4. Reversible endocytosis. a) Sketch showing the measured parameters for calculating the rescaled penetration depth, p . b) The penetration depth of condensates into vesicles, p , is fully reversible for multiple photoswitching cycles (up to six cycles were tested, each consisting of approximately 20 s irradiation with UV and 20 s irradiation with blue light). Each symbol represents a single vesicle-condensate pair and the data is measured from a single cross section.

condensate-membrane affinity increases upon *trans*-to-*cis* photoisomerization of azo-PC.

2.3. Light-Triggered Condensate Engulfment and Reversibility Kinetics

Next, we assessed the light-triggered endocytosis and partial engulfment over multiple cycles of UV and blue light irradiation. To quantify the light-induced engulfment and release of the protein condensates from GUVs containing 50 mol % azo-PC, the degree of the penetration of the protein condensates in the vesicles (penetration depth, p) was calculated. For this, we used confocal cross-sections at different levels perpendicular to the optical axis (z -axis) within the sample exposed to UV and blue illumination for two photo-switching cycles. The definition of p is based on the study of Dietrich et al.,^[33] which addresses the adhesion dynamics of spherical solid particles to lipid vesicles and reflects the distance d from the estimated outer rim of the vesicle to its interface with the particle (Figure 4a). This distance rescaled by the particle radius yields p . Ideally, the distance d and the condensate radius should be measured along the axis of rotation of the system, which may not always align with the focal plane of observations unless the vesicle and condensate have similar radii and their equators are in focus. To precisely measure d in our system, acquiring z -stacks for 3D imaging would be necessary to determine the correct projection along the rotational axis. However, generating a z -stack can take a few minutes, and the sample would need to be irradiated during that time. Therefore, we directly used confocal cross-sections to determine p , which may introduce some scatter in the data as the correct axis of rotation is not determined. Nevertheless, for investigating kinetics at shorter times and the reversibility of engulfment, we use the penetration depth determined from a single confocal cross-section at an intermediate height, roughly reflecting the sizes of the GUV and the condensate.

Figure 4b shows data for the penetration depth where $p \cong 2$ corresponds to endocytosis and $0 < p < 2$ reflects partial engulfment, see the Experimental section. The value of p also depends on the

initial excess area and relative condensate-vesicle sizes. The penetration depth and the GUV-to-condensate area under UV irradiation show an inverse correlation characterized by a Pearson coefficient of -0.57 , Figure S7 (Supporting Information). The penetration depth alternates with photoswitching cycles of UV and blue light and is fully reversible. Both light-triggered partial and complete engulfment processes are characterized by fast kinetics in the milliseconds (*cis*-to-*trans*) to a few seconds range (*trans*-to-*cis*), see Figure 5. This is consistent with the notion that the *trans* state is more stable. However, we emphasize that this dynamic behavior may vary depending on the light intensity (specified in the Experimental section). Furthermore, the time response of changes in vesicle area and condensate engulfment does not necessarily reflect the kinetics of the photoswitch isomerization but rather relates to the timescales involved in membrane reorganization, deformation, hydrodynamic contributions, and potential relative displacement of the GUV and/or condensate. In any case, the light-triggered kinetics observed here are faster than passive engulfment, which can take from seconds to minutes, or even hours depending on the particular condensate-vesicle system.^[12]

2.4. Recruiting Excess Membrane Area for Condensate Adhesion is Energetically More Favorable than Membrane Tubulation

As shown in Figure 1, the excess vesicle area generated by the *trans*-to-*cis* photoisomerization of azo-PC can be stored in tubes. When in contact with a condensate, this excess area goes to the membrane-condensate interface enabling partial or complete endocytosis of the condensate (Figures 2 and 5). However, we observed that nanotube formation can also take place during and after the engulfment of condensates. We questioned whether all area generated by *trans*-to-*cis* photoisomerization is transferred to the condensate interface. This required precise determination of the UV-induced area increase, which we assessed from electrodeformation of GUVs^[34] in the absence of condensates. The vesicles were exposed to an alternating current (AC) field to pull out membrane fluctuations and induce elliptical deformation.^[35]

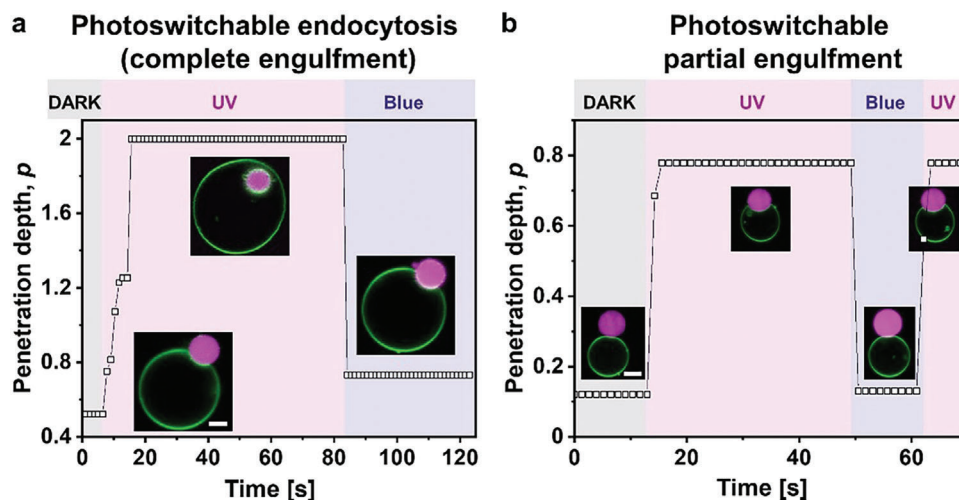


Figure 5. Penetration depth, p vs time showing the kinetics of photoswitchable endocytosis a) and b) partial-engulfment. Scale bars are $5\ \mu\text{m}$. The response of the GUV-condensate system to *trans*-to-*cis* photoisomerization is completed in 2–9 s, while the response to *cis*-to-*trans* photoisomerization occurs at times faster than the frame rate of the image acquisition (below 650 milliseconds). The values of p in each data point are estimated from a single frame, and the mismatch between the dark and blue penetration depths in panel (a) is due to the vesicle going out of focus during recording.

This allows the precise measure of the total vesicle area from its geometry, see the Experimental section. Subtracting this initial membrane area from the membrane area under the influence of both UV light and AC field yields a UV-induced area increase of $18 \pm 2\%$, (Figures S8–S10, Supporting Information), which is in good agreement with reported data for slightly different solution conditions.^[18]

We then compared this expected absolute area increase for individual vesicles wetted by a condensate with the change in apparent area of the vesicles measured directly from the microscopy images as the area sum of the bare vesicle membrane segment and the membrane segment in contact with the condensate (i.e. excluding the area of possible tubular structures), see Figure 6. Provided all UV-induced excess area is consumed to expand the membrane-condensate interface, the data should fall on a line described by $y = x$. However, many data points are distributed above this line, indicating that the excess area does not only accumulate at the membrane-condensate interface but is also stored in membrane nanotubes.

High salt and sugar concentrations are known to modify the membrane structure and properties.^[25,36] Under high salt/sugar asymmetry across the vesicle membrane, ion adsorption to the outer leaflet produces negative membrane spontaneous curvature, which stabilizes inward tubes.^[25] Note that in the absence of this salt asymmetry, UV irradiation only produces large membrane fluctuations in the GUVs but no tube formation, Figure S12 (Supporting Information). Thus, the total area increase due to UV irradiation of the vesicles (as plotted in Figure 6) represents the sum of the outer spherical vesicle membrane and the membrane area stored in tubes.

We also compared this area change to the change in the area of the membrane segment wetted by the condensate before and after UV illumination (Figure S11, Supporting Information). Similar trend was observed. The observations imply that nanotube formation competes with transferring the excess area to the membrane-condensate interface and that the final morphology

could depend on the initial geometry of the vesicle-condensate pair (note that the preparation method leads to vesicles with different area-to-volume ratios).

Next, we theoretically estimated the energetic gain of transferring the excess area to the vesicle-condensate interface and compared it to that arising from the formation of nanotubes. To estimate the energy gain arising from tubulation, we consider a cylindrical tube of area ΔA stabilized by membrane spontaneous curvature m . The tube is characterized by a radius $R_{tu} \cong \frac{1}{2m}$. The gain of bending energy, ΔE_{bc} associated with the transfer of the

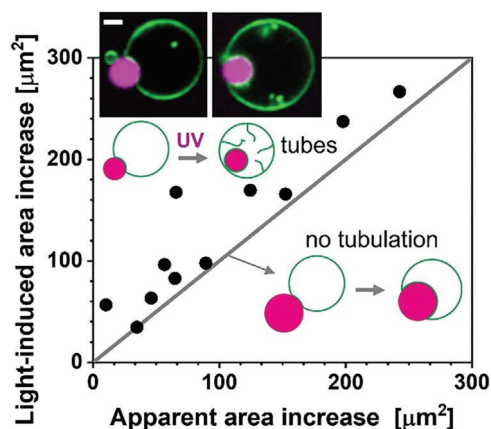


Figure 6. Light-induced area increase as expected from electrodeformation experiments (Figures S9–S11, Supporting Information) versus apparent area increase (area of the spherical segments of the bare and wetted membrane excluding tubes) for POPC:Azo-PC 1:1 GUVs in contact with condensate droplets. The system was irradiated with UV light for 10–20 s. Data fall at the $y = x$ gray line when all the excess area is transferred to the membrane-condensate contact area, as shown in the lower sketches. Data lying above this line correspond to vesicles in which part of the excess area is stored in nanotubes (upper sketch and example images; scale bar $5\ \mu\text{m}$). Each point corresponds to an individual vesicle-condensate pair.

membrane area ΔA from the weakly curved mother vesicle to the nanotube is given by

$$\Delta E_{bc} = -2\kappa m^2 \Delta A < 0 \quad (1)$$

where κ is the membrane bending rigidity. For membranes asymmetrically exposed to sugar and sodium chloride solutions as studied here, $m \approx 9 \mu\text{m}^{-1}$ as measured.^[25] The bending rigidity for POPC membranes containing 50 mol% of azo-PC is $\kappa \approx 10 k_B T_i$ ^[18] where $k_B T = 4.1 \times 10^{-21}$ J is the thermal energy. The excess area ΔA available for tube formation is simply the difference between the light-induced area change A_i and the apparent area A_{app} plotted in Figure 6, where we see that $\Delta A = A_i - A_{app}$ ranges between 0 and roughly $160 \mu\text{m}^2$. Taking $80 \mu\text{m}^2$ as a mean value of ΔA , we obtain for the bending energy gain $\Delta E_{bc} \approx -1.3 \times 10^5 k_B T$.

As long as the *ce* interface of the droplet (see Figure 3a) is not completely covered by the vesicle membrane, the photo-induced excess area ΔA can be alternatively used to increase the contact area between droplet and membrane. The adhesion energy per unit area is given by $\Phi \Sigma_{ce} \Delta A$ with $\Phi = 0.75$ when the membrane is exposed to UV light and the azo-PC lipids attain their *cis*-conformation (Figure 3b). As we cover the area ΔA of the droplet surface, we reduce its interfacial free energy by $\Sigma_{ce} \Delta A$. Therefore, the gain in adhesion energy is equal to

$$\Delta E_{ad} = (\phi - 1) \Sigma_{ce} \Delta A = -0.25 \Sigma_{ce} \Delta A \quad (2)$$

where the numerical value $\Phi = 0.75$ for *cis*-azo-PC has been used in the second equality. The interfacial tension has the value $\Sigma_{ce} \approx 0.5 \text{ mN m}^{-1}$ ^[11] which implies $\Delta E_{ad} = -2.4 \times 10^6 k_B T$ for $\Delta A = 80 \mu\text{m}^2$. Comparing the gain ΔE_{ad} in adhesion energy with the gain $\Delta E_{bc} \approx -1.3 \times 10^5 k_B T$ in bending energy as caused by tubulation, we conclude that the gain in adhesion energy exceeds the gain in bending energy by more than one order of magnitude. As a consequence, the vesicle membrane will continue to spread over the droplet until this droplet is completely engulfed. Any additional excess area created by the light-induced isomerization will be stored in membrane nanotubes. Indeed, a subsequent inspection of the vesicle-condensate images demonstrated that data points in Figure 6 located above the line with slope 1 correspond to vesicles where the condensates are completely engulfed and the remaining excess area engages in the formation of nanotubes (see confocal images in the inset).

3. Conclusions

In summary, our work shows that light can be used as a facile, inexpensive, and sustainable tool for efficiently tuning the membrane-condensate interactions in a fast and reversible manner. By using GUVs containing the azo-PC photolipid as minimalistic artificial cells, we effectively generated and characterized light-induced membrane-condensate wetting transitions leading to fast reversible endocytosis (within a few seconds) over multiple photoswitching cycles. By combining theoretical studies with experimental observations, we have elucidated the interaction mechanisms between protein condensates and lipid membranes leading to engulfment and membrane morphology changes. The

application of these results could be extended to different condensate systems and membrane compositions, provided that there is partial wetting between the condensate and the vesicles. The photoswitchable system presented here provides a promising platform for the development of synthetic cells and versatile drug delivery systems with applications in photo-pharmacology.

4. Experimental Section

Materials: The phospholipids 1-stearoyl-2-[(E)-4-((4-butylphenyl)diazanyl)phenyl]butanoyl]-sn-glycero-3-phosphocholine (azo-PC) and 1-palmitoyl-2-oleoyl-sn-glycero-3-phosphocholine (POPC) were purchased from Avanti Polar Lipids, Alabaster, AL, USA. The purity of azo-PC as indicated by the producer was >99%. The synthesis and characterization of the molecule were reported in^[19,37] and the UV/Vis spectrum of azo-PC was reported in^[19,38] and is displayed in Figure S9d (Supporting Information), see also^[39] for effect of membrane composition on the spectra. The lipid 1,2-dioleoyl-sn-glycero-3-phosphoethanolamine labeled with Atto 647N (Atto-647N-DOPE) was obtained from ATTO-TEC GmbH, Siegen, Germany. Sucrose, glucose, and sodium chloride (NaCl) were purchased from Merck, Germany. The fluorescent dye Sulforhodamine B (SRB) was obtained from ThermoFisher Scientific, Massachusetts, USA. Bovine serum albumin (BSA) was purchased from Merck, Germany. Stock solutions of the phospholipids and the dye-conjugated lipid were prepared in chloroform solution to a concentration of 4 mM and stored at -20°C until usage. Indium-tin oxide (ITO)-coated glass plates were purchased from PGO GmbH, Iserlohn, Germany. An Agilent 33220A 20 MHz Function/Arbitrary Waveform Generator from Agilent Technologies, USA was used for GUVs electroformation. The microscopic observations were done either with commercially available Eppendorf electrofusion chambers (Germany) or homemade chambers assembled from 22×40 and $22 \times 22 \text{ mm}^2$ cover slides purchased from Knittel Glass (Germany). Cover slides were rinsed with ethanol and distilled water and then passivated with a 2 mg mL^{-1} BSA solution. An Osmomat 3000 osmometer (Gonotec GmbH, Berlin, Germany) was used to measure solutions osmolarities.

All commercially available chemicals and solvents were used without further purification. In order to prevent any dust or dirt, all the glassware was rinsed with ethanol and chloroform, and then dried under an inert atmosphere before usage.

Vesicle Preparation: Giant unilamellar vesicles were prepared at room temperature (23°C) by the electroformation method.^[17] An equimolar solution of azo-PC and POPC including 0.1 mol% Atto-647N-DOPE was prepared in chloroform to a final concentration of 4 mM. In order to create a thin lipid film, $14 \mu\text{L}$ of this lipid solution was first spread on a pair of electrically conductive, ITO-coated glass plates and then the majority of the chloroform was evaporated by exposing the plates to a stream of N_2 . For the removal of solvent traces, the plates were also subsequently placed under a vacuum for two hours. A chamber was assembled using a rectangular Teflon spacer of 2 mm thickness sandwiched between the ITO-glass plates. The chamber was filled with a solution of 300 mM ($300 \text{ mOsmol kg}^{-1}$) sucrose to hydrate the lipid film. Electroswelling was induced by applying an AC field at 10 Hz frequency with a 1.6 V (peak to peak) amplitude for 1 h in the dark. GUVs were then transferred to light-protective glass vials for storage at room temperature and used the same day.

For the GUV electrodeformation studies, GUVs were swelled in a 100 mM sucrose and 0.5 mM NaCl solution and then were 8-fold diluted in a 105 mM glucose solution. The presence of a small amount of salt ensures higher conductivity of the internal solution compared to the external one, resulting in prolate deformation of the GUVs under the AC field.^[35] The control experiments of azo-PC GUVs in low sugar concentrations and in the absence of any salts in the external GUV medium were performed by harvesting GUVs in 100 mM sucrose solution and 1:1 dilution into 105 mM glucose solution for the confocal microscopy observations.

Large unilamellar vesicles (LUVs) used for UV-Vis spectroscopy were prepared as follows. The azo-PC solution in chloroform (10 mg mL^{-1}) was dried in a glass vial under a stream of nitrogen and subsequently placed

in a desiccator for 2 h. Water was then added to the vial to achieve a final lipid concentration of 1.5 mM. Multilamellar vesicles were produced through three freeze-thaw cycles, involving immersion in liquid nitrogen and incubation in a 60 °C metal block, followed by vortexing. The multilamellar vesicles were extruded through a 100 nm polycarbonate membrane (Whatman Nuclepore Track-Etched Membranes, Merck, Germany) using an Avanti MiniExtruder (Avanti Polar Lipids, USA) for a total of 21 times to obtain LUVs.

Protein Purification and Condensate Formation: Glycinin was purified as described by Chen et al.^[21] Briefly, defatted soy flour was dispersed 15-fold in water by weight and adjusted to pH 7.5 with 2 M NaOH. After centrifugation at 9000×g for 30 min at 4 °C, dry sodium bisulfite was added to the supernatant (0.98 g L⁻¹). The pH of the solution was adjusted to 6.4 with 2 M HCl, and the obtained turbid dispersion was kept at 4 °C overnight. Next, the dispersion was centrifuged at 6500 × g for 30 min at 4 °C. The glycinin-rich precipitate was dispersed 5-fold in water, and the pH was adjusted to 7. The glycinin solution was then dialyzed against Millipore water for two days at 4 °C and then freeze-dried to acquire the final product with a purity of 97.5%.^[21]

To form the condensates, a 20 mg mL⁻¹ glycinin solution at pH 7 was freshly prepared in ultrapure water and filtered with 0.45 μm filters to remove any insoluble materials. Then, the desired volume of the glycinin solution was mixed with the same volume of a 300 mM NaCl solution to achieve a solution with final concentrations of 10 mg mL⁻¹ glycinin and 150 mM NaCl. The condensates were labeled by including 10 μM SRB dye prior to condensate formation.

Condensate-Vesicle Suspensions: First, the vesicle suspension was diluted 1:10 in a 150 mM NaCl solution. Then, the condensate suspension was diluted 1:4 and added to the vesicle suspension at 15% v/v (corresponding to a final protein concentration of 0.4 mg mL⁻¹). After gently mixing the vesicle-condensate suspension, an aliquot of 10 μL was placed on a coverslip for confocal microscopy, and a chamber was formed using a round spacer and closed with a coverslip.

Confocal Microscopy Imaging and Irradiation Conditions: UV-induced morphological changes of azo-PC GUVs as well as the engulfment of protein condensates into GUVs were monitored through a Leica TCS SP8 scanning confocal microscope (Wetzlar, Germany) using either a 40× (0.60 NA) air or 63× (1.2 NA) water immersion objectives. The pinhole size during the experiment was set to 1 AU (Airy unit) and the scanning speed was 400 Hz in bidirectional mode. Time-lapse imaging was performed at a frame rate of 650 ms per frame. SRB was excited with a 561 nm laser and the emission signal was collected with HyD (hybrid) detector in the 573–626 nm range. Atto-647N-DOPE was excited with a HeNe 633nm laser and the emission signal was collected with a HyD detector in the range 645–785 nm. In order to induce *trans*-to-*cis* photoisomerization of azo-PC in the GUVs, an external UV LED (365 nm wavelength; “UV light”) with a maximum power intensity of 20 mW cm⁻² (Roschwege, Germany) was attached to the condenser of the confocal microscope. The reversed azo-PC photoisomerization (*cis*-to-*trans*) was generated by simultaneously using 458 and 476 nm lasers at 50% intensity (“blue light”), respectively corresponding to 0.40 and 0.67 mW cm⁻² measured in line-scanning mode and at the position of the sample using a LaserCheck power meter (Coherent, USA). Under the conditions of UV/blue light intensities used in our experiments the isomerization, as assessed from vesicle deformation response, is fully reversible over multiple cycles and within the experimental sensitivity range, as shown earlier^[18] and confirmed here (Figure S9d,e, Supporting Information). Considering that experimentally measured membrane area changes were found very consistent with simulations,^[18] it is tempting to speculate that the azo-PC molecules in the membrane undergo complete *trans*-*cis* conversion. Even though assessing the precise degree of conversion was not crucial for the experiments reported here, confirming this speculation for full photoconversion with additional experimental techniques would be advantageous.

Phase Contrast Microscopy Imaging and Irradiation Conditions: Electrodeformation of azo-PC GUVs was monitored under phase contrast mode of an inverted Axio Observer D1 microscope (Zeiss, Germany), equipped with a Ph2 40x (NA 0.6) objective. Images were acquired with an ORCA R2 CCD camera (Hamamatsu, Japan). The GUVs were placed

either in an Eppendorf electrofusion chamber or a homemade chamber with approximate thicknesses of 8 or 1 mm, respectively; Figure S8 (Supporting Information). To induce UV irradiation, the light from the HBO 100W mercury lamp was used in epi-illumination mode and was collected through a 365 nm DAPI filter. For blue irradiation, the light from the mercury lamp was applied through a 470/40 nm filter. The irradiation power of the HBO lamp was measured with the LaserCheck power meter at the position of the sample and recorded as 60 mW cm⁻² for the UV filter and 26 mW cm⁻² for the blue filter.

Penetration Depth Analysis and Irradiation: The penetration depth of the protein condensate into GUV, p , reflects the degree of insertion of the droplet inside the vesicle and is calculated as:

$$p = \frac{d}{R_{\text{cond}}} \quad (3)$$

where R_{cond} and d are defined in Figure 4a. For each interacting condensate-GUV pair, d was measured from confocal screenshots using the Fiji software at 3 illumination conditions. In the initial illumination condition, “dark”, the 561 and 633 nm lasers were used to only excite the fluorescent dyes labeling the condensate and the membrane. In addition to these two lasers, an external UV LED at 365 nm was used to promote the *trans*-to-*cis* isomerization of azo-PC, and this condition was referred to as “UV-light”. Switching off the UV LED was followed by the immediate exposure of the sample to 458 and 476 nm lasers, which was referred to as “blue-light”. Then, the measured d and R_{cond} values were used in Equation 3 to calculate the p values at the three conditions (dark, UV, blue) for 2 photo-switching cycles. Origin Pro was used for plotting the penetration depth values from 15 protein condensates interacting with 8 GUVs (Figure 4b).

Fourier-Transform Infrared (FTIR-ATR) Spectroscopy: Spectra were recorded on an infrared microscope AIM-90000 (SHIMADZU, Germany) equipped with an ATR objective. First, a 3 μL aliquot of each sample was spread on glass slides and dried until a film formed with N₂. A second aliquot was spread on glass slides and irradiated for 10–20 s with the above-mentioned UV LED, before drying it with N₂ until a film was formed. The ATR objective was placed pressing the sample to acquire the protein spectra. Measurements consisted of an average of 64 scans recorded at 25 °C with a nominal resolution of 4 cm⁻¹. The spectra were processed using Kinetic software developed by Dr. Erik Goormaghtigh of the Structure and Function of Membrane Biology Laboratory (Université Libre de Bruxelles, Belgium).^[40] The spectra were analyzed in the amide I' region of the protein (1700 and 1600cm⁻¹). The spectra were deconvoluted using the Lorentzian deconvolution factor with a full width at the half maximum (FWHM) of 30 cm⁻¹ and a Gaussian apodization factor with a FWHM of 16.66 cm⁻¹ to obtain a line narrowing factor $K = 1.8$. Band assignment was performed using the deconvoluted and second derivative spectra of each sample in the amide I' region. These were the initial parameters for an iterative least square curve fit of the original IR band ($K = 1$) using mixed Gaussian–Lorentzian bands. The bounds for the peak positions of each identified individual component were within ±2 cm⁻¹ of the initial value. The FWHM input values are described in detail in Table S1 (Supporting Information). FTIR-ATR spectra and analysis of the secondary structure content of glycinin condensates before and after the UV illumination are demonstrated in Figure S5 (Supporting Information).

Vesicle Electrodeformation: Electrodeformation experiments to determine the membrane area changes associated with azo-PC isomerization were performed using both, a Leica TCS SP8 scanning confocal microscope (Wetzlar, Germany) equipped with an HC PL FLUOTAR L 40x (0.60 NA) objective, and an inverted microscope in phase contrast mode Axio Observer D1 (Zeiss, Germany) equipped with a PH2 40x (0.6 NA) objective and an ORCA R2 CCD camera (Hamamatsu, Japan). GUVs were observed in a commercial Eppendorf electrofusion chamber (Eppendorf, Germany) or a home-made chamber (Figure S8, Supporting Information) to compare the effect of chamber thickness on the penetration of UV-light through the sample and observation of light-induced changes on the vesicles in the sample. The Eppendorf chamber (Figure S8a, Supporting Information) contains two parallel cylindrical platinum electrodes 92 μm in

radius, located 500 μm apart from each other. There the GUVs were exposed to an AC field (1 MHz, 5 V peak-to-peak amplitude), as previously described.^[35,41] The homemade chamber was assembled on a $22 \times 40 \text{ mm}^2$ glass cover slide with a pair of parallel copper strips (3M, Cergy-Pontoise, France) located 1 mm apart from each other (Figure S8b, Supporting Information). Small Parafilm pieces were attached to the glass slide 10 mm apart from each other to seal the ends and form a closed compartment. An aliquot of 50 μL GUV solution 1:1 diluted in 105 mM glucose buffer was added in the spacing between the copper tapes and a $22 \times 22 \text{ mm}^2$ cover slide was placed on top of the solution.

Contrary to the Eppendorf chamber, the thickness of the homemade chamber was comparable to the one used for the rest of the microscopy experiments. However, the homemade chamber could not be used together with the external UV LED on the confocal microscope due to safety reasons associated with the strong reflection of the UV light from the copper tapes to the user. By repeating the electrodeformation experiments with both chambers under a phase contrast microscope, which did not require the attachment of an external UV LED, we could rule out the effect of chamber thickness on the penetration of UV light into the sample (Figure S10c, Supporting Information).

The copper tape electrodes were connected to Agilent 33220A 20 MHz Function/Arbitrary Waveform Generator (Agilent Technologies, USA) as shown in Figure S8 (Supporting Information). The voltage and frequency of the electric field were set to 10 V (peak to peak) and 1 MHz, respectively.

Before the electric field application, a typical, tensionless GUV adopts a quasi-spherical morphology and displays visual membrane fluctuations through microscopy observations. In the vesicle electrodeformation method, a mild AC field was used to pull out the excess vesicle area stored in membrane fluctuations and tubes by deforming the vesicles into ellipsoidal shapes^[42] thus providing an accurate and direct assessment of the total membrane area. The area of an ellipsoidal vesicle is:

$$A = 2\pi b \left(b + a \frac{\sin^{-1} \epsilon}{\epsilon} \right) \quad (4)$$

Here, a and b are the vesicle semi-axes along and perpendicular to the applied electric field, while ϵ denotes ellipticity: $\epsilon^2 = 1 - (b/a)^2$.

After recording the area increase of GUVs under AC field, they were next illuminated with UV light, while the AC field was also still switched on, and further area increase of the vesicles was recorded for 40–50 s at an acquisition speed of 8 frames per second (fps), Figure S9 (Supporting Information). Subtracting the initial vesicle area in the absence of UV light (but with electric field on), A_i , from the vesicle area under UV light, A_{UV} , yields the percentage of relative area increase as $\frac{A_{UV}-A_i}{A_{UV}} \times 100\%$ related to the *trans-to-cis* photoisomerization of azo-PC.

The length of the vesicle semi-axes was measured from the recorded vesicle images using Fiji software. Between 10 and 15 GUVs were analyzed from three separate sets of experiments for each condition to generate statistics. The corresponding plots in Figures S9 and S10 (Supporting Information) are prepared with Origin Pro. The statistical significance of the vesicle area changes from different microscopy techniques and chamber conditions was tested with the one-way analysis of variance (ANOVA) and t-test (p -values for null hypothesis were found as 0.76 and 0.082, respectively).

Since the majority of observations in this manuscript rely on confocal microscopy imaging performed in a thinner home-made chamber, electrodeformation calculations were also performed through confocal images focused on the equatorial trajectories of the vesicles sampled on the home-made chamber with the same thickness dimensions as in the rest of the experiments. Because confocal images display information from a single focal plane, any potential experimental error or deviation was checked carefully and the accuracy of the confocal experiments to obtain the precise maximum projection of the vesicles for area increase calculations was compared to the results from phase contrast microscopy (Figure S10c, Supporting Information). Similarly, effects from differences in the chamber thickness potentially affecting the UV irradiation through the GUV sample were also examined (Figure S10c, Supporting Information).

Analysis of Changes in the Apparent Light-Induced and Adhesion Areas: In order to check the relation between the UV-induced area increase of GUVs and the increase in the membrane area adhered to the protein condensates, the interaction of GUVs and protein condensates were monitored first in the absence and then in the presence of UV light under confocal microscopy. Subtracting the initial vesicle area in the absence of UV irradiation from the vesicle area under UV illumination allowed to deduce the apparent area increase of azo-PC GUVs interacting with the protein condensates. The observed area increase was associated with the *trans-to-cis* photoisomerization of the azo-PC molecules. The area increase of the spherical segments was defined as an ‘apparent area increase’ and further compared to the expected area increase as assessed by the electrodeformation method.

Statistics of the plots in Figure 6 in the main text and Figure S11 (Supporting Information) were generated with 11 data points for ten pairs of GUV-condensate systems in which each vesicle interacted with only one condensate. To calculate the areas of the bare membrane segment and the one in contact with the condensate, spherical cap geometry was assumed. All plots were generated through Origin Pro software.

In order to probe the correlation of the size differences between the interacting GUV and condensate to the distribution of the adhered area changes in the above-mentioned plots, the ratio of the condensate-to-GUV area $\frac{R_{cond}^2}{R_{GUV}^2}$ was measured and the resulting values were displayed above each data point in Figure S11 (Supporting Information). No correlation was detected between this ratio and the distribution of data points in Figure S11 (Supporting Information).

UV-Vis Spectroscopy: Absorbance spectra were recorded in a Specord 210 Plus UV-Vis spectrophotometer (Analytik Jena, Germany) using a 1 cm path quartz cuvette (Hellma Analytics, Germany). The slit was set to 1 nm and the scanning speed to 20 nm s^{-1} . The blank solution (water) was subtracted from all curves. The LUV samples, diluted to a concentration of 30 μM , were irradiated using either fiber-coupled LED blue light at 450 nm (Doric, Canada) with a maximum intensity of 55 mW cm^{-2} or the same external UV LED used for the microscopy measurements. Irradiation for 1 min was applied to generate LUVs in either *trans* or *cis* states.

Statistical Analysis: Individual points shown in the graphics correspond to individual vesicle-condensate pairs unless stated otherwise. Where indicated, results were analyzed using One-way ANOVA, t-test, Tukey post-test, and Pearson correlation coefficient analysis ($p < 0.0001$, **** | $p < 0.001$, *** | $p < 0.01$, ** | $p < 0.05$, * | n.s. = non-significant). Statistical analysis and data processing were performed with the Origin Pro software (Originlab corporation). All microscopy images shown were representative of at least three independent experiments. Details for the statistical analysis were further described in the corresponding plots in the main text and Supporting Information.

Supporting Information

Supporting Information is available from the Wiley Online Library or from the author.

Acknowledgements

A.M. acknowledges support from the Alexander von Humboldt Foundation. M.A. acknowledges funding from the International Max Planck Research School on Multiscale Bio-systems. The authors would like to acknowledge Dr. Nannan Chen for providing the purified protein, and Fucsia Crea, Nicky Tam, and Joachim Heberle for fruitful discussions. This work was supported by Germany’s Excellence Strategy, EXC 2008/1 (UniSysCat), Grant 390540038.

Conflict of Interest

The authors declare no conflict of interest.

Author Contributions

A.M. and M.A. contributed equally to this work. R.D. designed the project. A.M., M.A., M.S., and T.-W.S. performed the experiments and analyzed the data. R. L. and R.D. developed the theoretical interpretation. All authors wrote and edited the manuscript.

Data Availability Statement

The data that support the findings of this study are available from the corresponding author upon reasonable request.

Keywords

endocytosis, giant vesicles, membrane morphology, photoswitchable lipids, protein-rich condensates, wetting

Received: December 15, 2023

Revised: March 14, 2024

Published online:

- [1] a) S. F. Banani, H. O. Lee, A. A. Hyman, M. K. Rosen, *Nat. Rev. Mol. Cell Biol.* **2017**, *18*, 285; b) C. P. Brangwynne, C. R. Eckmann, D. S. Courson, A. Rybarska, C. Hoegge, J. Gharakhani, F. Jülicher, A. A. Hyman, *Science* **2009**, *324*, 1729.
- [2] a) F., M. Boisvert, S. van Koningsbruggen, J. Navascués, A. I. Lamond, *Nat. Rev. Mol. Cell Biol.* **2007**, *8*, 574; b) T. Hirose, K. Ninomiya, S. Nakagawa, T. Yamazaki, *Nat. Rev. Mol. Cell Biol.* **2023**, *24*, 288.
- [3] X. Su, J. A. Ditlev, E. Hui, W. Xing, S. Banjade, J. Okrut, D. S. King, J. Taunton, M. K. Rosen, R. D. Vale, *Science* **2016**, *352*, 595.
- [4] D. S. W. Protter, R. Parker, *Trends Cell Biol.* **2016**, *26*, 668.
- [5] L. Lei, Z. Wu, K. F. Winkhofer, *Matrix Biol.* **2021**, *100–101*, 9.
- [6] B. Ramm, D. Schumacher, A. Harms, T. Heermann, P. Klos, F. Müller, P. Schwille, L. Søgaard-Andersen, *Nat. Commun.* **2023**, *14*, 3825.
- [7] O. Beutel, R. Maraschini, K. Pombo-García, C. Martin-Lemaître, A. Honigsmann, *Cell* **2019**, *179*, 923.
- [8] Y., C. Liao, M. S. Fernandopulle, G. Wang, H. Choi, L. Hao, C. M. Drerup, R. Patel, S. Qamar, J. Nixon-Abell, Y. Shen, W. Meadows, M. Vendruscolo, T. P. J. Knowles, M. Nelson, M. A. Czekalska, G. Musteikyte, M. A. Gachechiladze, C. A. Stephens, H. A. Pasolli, L. R. Forrest, P. St George-Hyslop, J. Lippincott-Schwartz, M. E. Ward, *Cell* **2019**, *179*, 147.
- [9] C. Bussi, A. Mangiarotti, C. Vanhille-Campos, B. Aylan, E. Pellegrino, N. Athanasiadi, A. Fearn, A. Rodgers, T. M. Franzmann, A. Šarić, R. Dimova, M. G. Gutierrez, *Nature* **2023**, *623*, 1062.
- [10] a) L., P. Bergeron-Sandoval, S. Kumar, K. Heris Hossein, L. A. Chang Catherine, E. Cornell Caitlin, L. Keller Sarah, P. François, G. Hendricks Adam, J. Ehrlicher Allen, V. Pappu Rohit, W. Michnick Stephen, *Proc. Natl. Acad. Sci. USA* **2021**, *118*, e2113789118; b) K. J. Day, G. Kago, L. Wang, J. B. Richter, C. C. Hayden, E. M. Lafer, J. C. Stachowiak, *Nat. Cell Biol.* **2021**, *23*, 366.
- [11] a) Y. Li, R. Lipowsky, R. Dimova, *J. Am. Chem. Soc.* **2008**, *130*, 12252; b) A. Mangiarotti, N. Chen, Z. Zhao, R. Lipowsky, R. Dimova, *Nature Commun* **2023**, *14*, 2809.
- [12] T. Lu, S. Liese, L. Schoenmakers, C. A. Weber, H. Suzuki, W. T. S. Huck, E. Spruijt, *J. Am. Chem. Soc.* **2022**, *144*, 13451.
- [13] T. Lu, S. Javed, C. Bonfio, E. Spruijt, *Small Methods* **2023**, *7*, 2300294.
- [14] T. Lu, X. Hu, M. H. I. van Haren, E. Spruijt, W. T. S. Huck, *Small* **2023**, *19*, 2303138.
- [15] Z. Lin, T. Beneyton, J., C. Baret, N. Martin, *Small Methods* **2023**, *7*, 2300496.
- [16] a) A. Goulet-Hanssens, F. Eisenreich, S. Hecht, *Adv. Mater.* **2020**, *32*, 1905966; b) J. Simon, M. Schwalm, J. Morstein, D. Trauner, A. Jasanoff, *Nat. Biomed. Eng.* **2023**, *7*, 313; c) J. Morstein, M. Kol, A. J. E. Novak, S. Feng, S. Khayyo, K. Hinnah, N. Li-Purcell, G. Pan, B. M. Williams, H. Riezman, G. E. Atilla-Gokcumen, J. C. M. Holthuis, D. Trauner, *ACS Chem. Biol.* **2021**, *16*, 452.
- [17] a) R. Dimova, C. Marques, *The Giant Vesicle Book*, Taylor & Francis Group, Boca Raton **2019**; b) R. Dimova, *Annu. Rev. Biophys.* **2019**, *48*, 93; c) T. Toyota, Y. Zhang, *Micromachines* **2022**, *13*, 644; d) Y. Li, S. Liu, W. Xu, K. Wang, F. He, J. Liu, *Sensors & Diagnostics* **2023**, *2*, 806; e) R. Dimova, S. Aranda, N. Bezlyepkina, V. Nikolov, K. A. Riske, R. Lipowsky, *J. Phys.: Condens. Matter* **2006**, *18*, S1151.
- [18] M. Aleksanyan, A. Grafmüller, F. Crea, V. N. Georgiev, N. Yandrapalli, S. Block, J. Heberle, R. Dimova, *Adv. Sci.* **2023**, *10*, 2304336.
- [19] a) J. A. Frank, D. A. Yushchenko, D. J. Hodson, N. Lipstein, J. Nagpal, G. A. Rutter, J. S. Rhee, A. Gottschalk, N. Brose, C. Schultz, D. Trauner, *Nat. Chem. Biol.* **2016**, *12*, 755; b) C. Pernpeintner, J. A. Frank, P. Urban, C. R. Roeske, S. D. Pritzl, D. Trauner, T. Lohmüller, *Langmuir* **2017**, *33*, 4083.
- [20] a) P. Urban, S. D. Pritzl, D. B. Konrad, J. A. Frank, C. Pernpeintner, C. R. Roeske, D. Trauner, T. Lohmüller, *Langmuir* **2018**, *34*, 13368; b) M. Doroudgar, J. Morstein, J. Becker-Baldus, D. Trauner, C. Glaubitz, *J. Am. Chem. Soc.* **2021**, *143*, 9515; c) J. Morstein, A. C. Impastato, D. Trauner, *ChemBioChem* **2021**, *22*, 73.
- [21] a) N. Chen, Z. Zhao, Y. Wang, R. Dimova, *ACS Macro Lett.* **2020**, *9*, 1844; b) N. Chen, M. Zhao, T. Nicolai, C. Chassenieux, *Biomacromolecules* **2017**, *18*, 2064.
- [22] A. Mangiarotti, R. Dimova, *Annu. Rev. Biophys.* **2024**, *53*, 319.
- [23] A. Mangiarotti, M. Siri, N. W. Tam, Z. Zhao, L. Malacrida, R. Dimova, *Nat. Commun.* **2023**, *14*, 6081.
- [24] a) H. M. D. Bandara, S. C. Burdette, *Chem. Soc. Rev.* **2012**, *41*, 1809; b) M. Gao, D. Kwaria, Y. Norikane, Y. Yue, *Natural Sciences* **2023**, *3*, e220020.
- [25] M. Karimi, J. Steinkühler, D. Roy, R. Dasgupta, R. Lipowsky, R. Dimova, *Nano Lett.* **2018**, *18*, 7816.
- [26] R. Lipowsky, *J. Phys. Chem. B* **2018**, *122*, 3572.
- [27] a) A. Roux, K. Uyhazi, A. Frost, P. De Camilli, *Nature* **2006**, *441*, 528; b) M. Simunovic, J., B. Manneville, H., F. Renard, E. Evergren, K. Raghunathan, D. Bhatia, A. K. Kenworthy, G. A. Voth, J. Prost, H. T. McMahon, L. Johannes, P. Bassereau, A. Callan-Jones, *Cell* **2017**, *170*, 172.
- [28] Y. Avalos-Padilla, V. N. Georgiev, E. Ewins, T. Robinson, E. Orozco, R. Lipowsky, R. Dimova, *iScience* **2023**, *26*, 105765.
- [29] a) R. Ghosh, V. Satarifard, R. Lipowsky, *Nat. Commun.* **2023**, *14*, 615; b) J. Steinkühler, R. L. Knorr, Z. Zhao, T. Bhatia, S. M. Bartelt, S. Wegner, R. Dimova, R. Lipowsky, *Nature Commun* **2020**, *11*, 905.
- [30] R. Lipowsky, *Membranes* **2023**, *13*, 223.
- [31] Z. Zhao, D. Roy, J. Steinkühler, T. Robinson, R. Lipowsky, R. Dimova, *Adv. Mater.* **2022**, *34*, 2106633.
- [32] a) H. Kusumaatmaja, Y. Li, R. Dimova, R. Lipowsky, *Phys. Rev. Lett.* **2009**, *103*, 238103; b) R. Lipowsky, in *The Giant Vesicle Book* (Eds.: R. Dimova, C. Marques), Taylor & Francis Group, Boca Raton **2019**, pp. 73–168; c) *Faraday Discuss.* **2013**, *161*, 305.
- [33] C. Dietrich, M. I. Angelova, B. Pouligny, *J. Phys. II* **1997**, *7*, 1651.
- [34] a) K. A. Riske, T. P. Sudbrack, N. L. Archilha, A. F. Uchoa, A. P. Schroder, C. M. Marques, M. S. Baptista, R. Itri, *Biophys. J.* **2009**, *97*, 1362; b) M. Aleksanyan, H. A. Faizi, M., A. Kirmpaki, P. M. Vlahovska, K. A. Riske, R. Dimova, *Adv. Phys.: X* **2023**, *8*, 2125342; c) V. N. Georgiev, A. Grafmüller, D. Bléger, S. Hecht, S. Kunstmann, S. Barbirz, R. Lipowsky, R. Dimova, *Adv. Sci.* **2018**, *5*, 1800432.
- [35] S. Aranda, K. A. Riske, R. Lipowsky, R. Dimova, *Biophys. J.* **2008**, *95*, L19.
- [36] a) H. D. Andersen, C. Wang, L. Arleth, G. H. Peters, P. Westh, *Proc. Natl. Acad. Sci. USA* **2011**, *108*, 1874; b) A. Catte, M. Girych,

- M. Javanainen, C. Loison, J. Melcr, M. S. Miettinen, L. Monticelli, J. Määttä, V. S. Oganessian, O. H. S. Ollila, J. Tynkkynen, S. Vilov, *Phys. Chem. Chem. Phys.* **2016**, *18*, 32560.
- [37] J. A. Frank, Dissertation, LMU Munich, **2017**.
- [38] F. Crea, A. Vorkas, A. Redlich, R. Cruz, C. Shi, D. Trauner, A. Lange, R. Schlesinger, J. Heberle, *Front. Mol. Biosci.* **2022**, *9*, 905306.
- [39] A. Manafirad, C. A. Menendez, G. R. Perez-Lemus, S. Thayumanavan, J. J. de Pablo, A. D. Dinsmore, *Langmuir* **2023**, *39*, 15932.
- [40] a) E. Goormaghtigh, V. Cabiaux, J., M. Ruyschaert, *Eur. J. Biochem.* **1990**, *193*, 409; b) G. Long, Y. Ji, H. Pan, Z. Sun, Y. Li, G. Qin, *Int. J. Food Prop.* **2015**, *18*, 763.
- [41] K. A. Riske, T. P. Sudbrack, N. L. Archilha, A. F. Uchoa, A. P. Schroder, C. M. Marques, M. S. Baptista, R. Itri, *Biophys. J.* **2009**, *97*, 1362.
- [42] R. Dimova, K. A. Riske, S. Aranda, N. Bezlyepkina, R. L. Knorr, R. Lipowsky, *Soft Matter* **2007**, *3*, 817.

Supporting Information

for *Adv. Sci.*, DOI 10.1002/adv.202309864

Photoswitchable Endocytosis of Biomolecular Condensates in Giant Vesicles

*Agustín Mangiarotti, Mina Aleksanyan, Macarena Siri, Tsu-Wang Sun, Reinhard Lipowsky
and Rumiana Dimova**

Supporting Information

Photoswitchable Endocytosis of Biomolecular Condensates in Giant Vesicles

Agustín Mangiarotti^{1‡}, Mina Aleksanyan^{1,2‡}, Macarena Siri^{1,3}, Tsu-Wang Sun¹,
Reinhard Lipowsky¹ and Rumiana Dimova^{1*}

¹ Max Planck Institute of Colloids and Interfaces, Science Park Golm, 14476 Potsdam, Germany

² Institute for Chemistry and Biochemistry, Free University of Berlin, Takustraße 3, 14195 Berlin, Germany

³ Max Planck Queensland Centre, Science Park Golm, 14476 Potsdam, Germany

[‡]Authors contributed equally.

*Address for correspondence: Rumiana.Dimova@mpikg.mpg.de

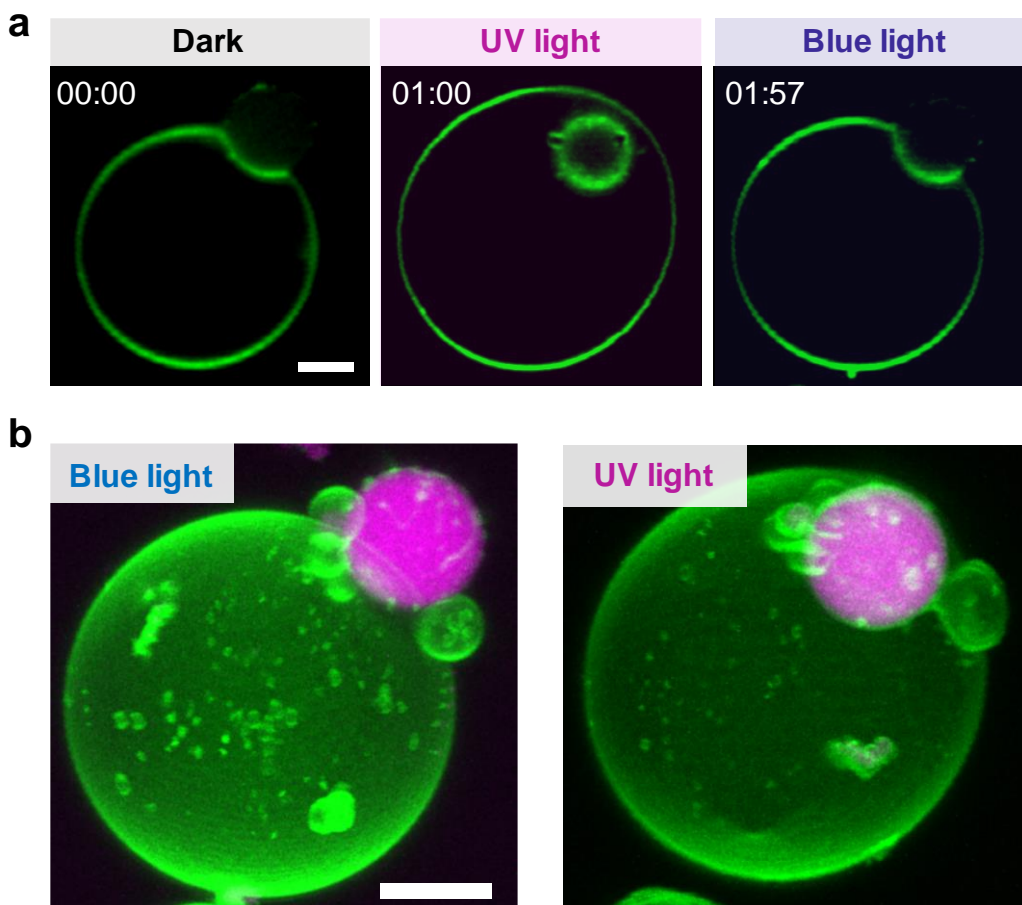


Figure S1. (a) Membrane channel and (b) 3D confocal projection for the vesicle shown in Figure 2b under blue and UV light as indicated. Note that the centers of the condensate droplet and the vesicle are not always in focus. Thus, contrary to 3D projections, confocal cross-sections do not always show properly the area increase and degree of engulfment upon isomerization. The time stamps (mm:ss) correspond to the time after starting the recording. Scale bars are 5 μm .

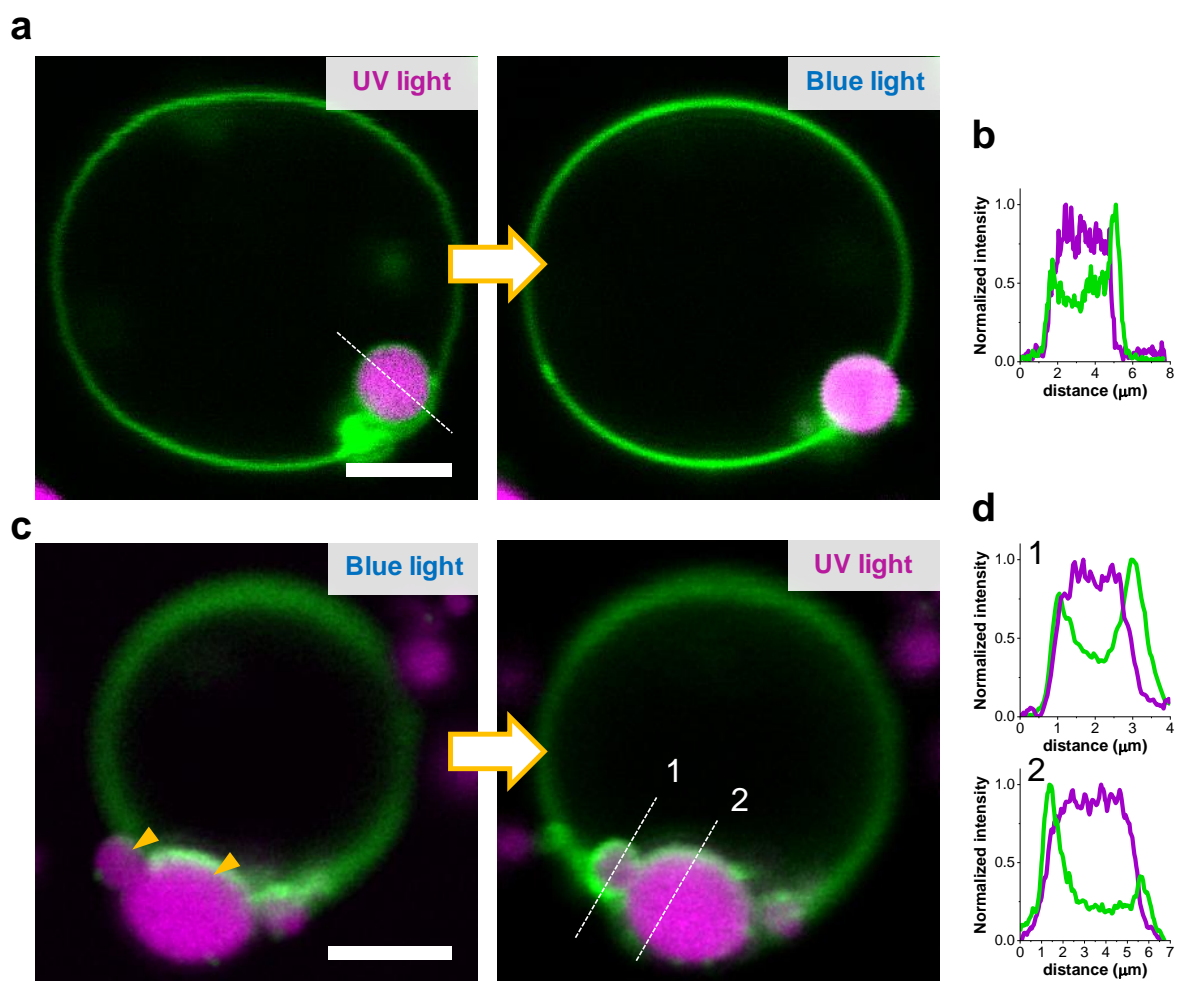


Figure S2. Confocal microscopy images showing examples of photoswitchable endocytosis. GUVs composed of equimolar POPC and azo-PC and labelled with 0.1 mol% Atto-647N-DOPE. Glycinin condensates are labelled with 10 μ M SRB. (a) The completely engulfed condensate is released after blue light exposure; see Movie S5 for duration of irradiation. (b) Intensity profiles (green – membrane, magenta – condensate) for the dashed line shown in (a) demonstrate that the droplet is fully wrapped by the membrane evidenced by the two peaks in the green profile. (c) The condensates indicated by the yellow arrows become engulfed after 1 s UV light exposure; see Movie S6 for duration of irradiation. (d) Intensity profiles for the dashed lines shown in (c). Scale bars are 5 μ m. Further examples for complete engulfment are found in Fig S4.

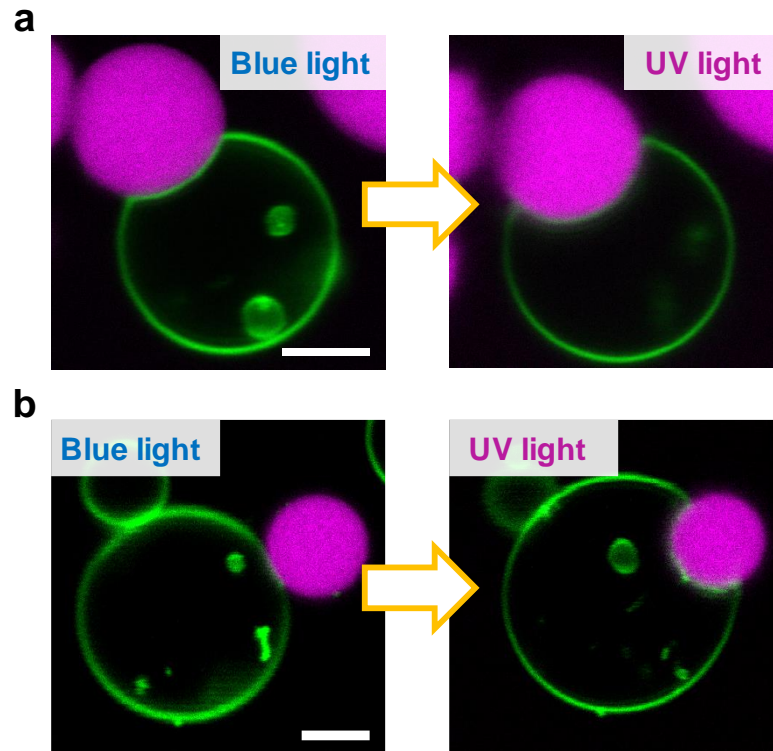


Figure S3. (a-b) Confocal microscopy images showing examples of photoswitchable partial-engulfment, see Movies S7 and S8 for duration of irradiation. GUVs composed of equimolar POPC and azo-PC and labelled with 0.1 mol% Atto-647N-DOPE. Glycinin condensates are labelled with 10 μ M SRB. Scale bars are 5 μ m.

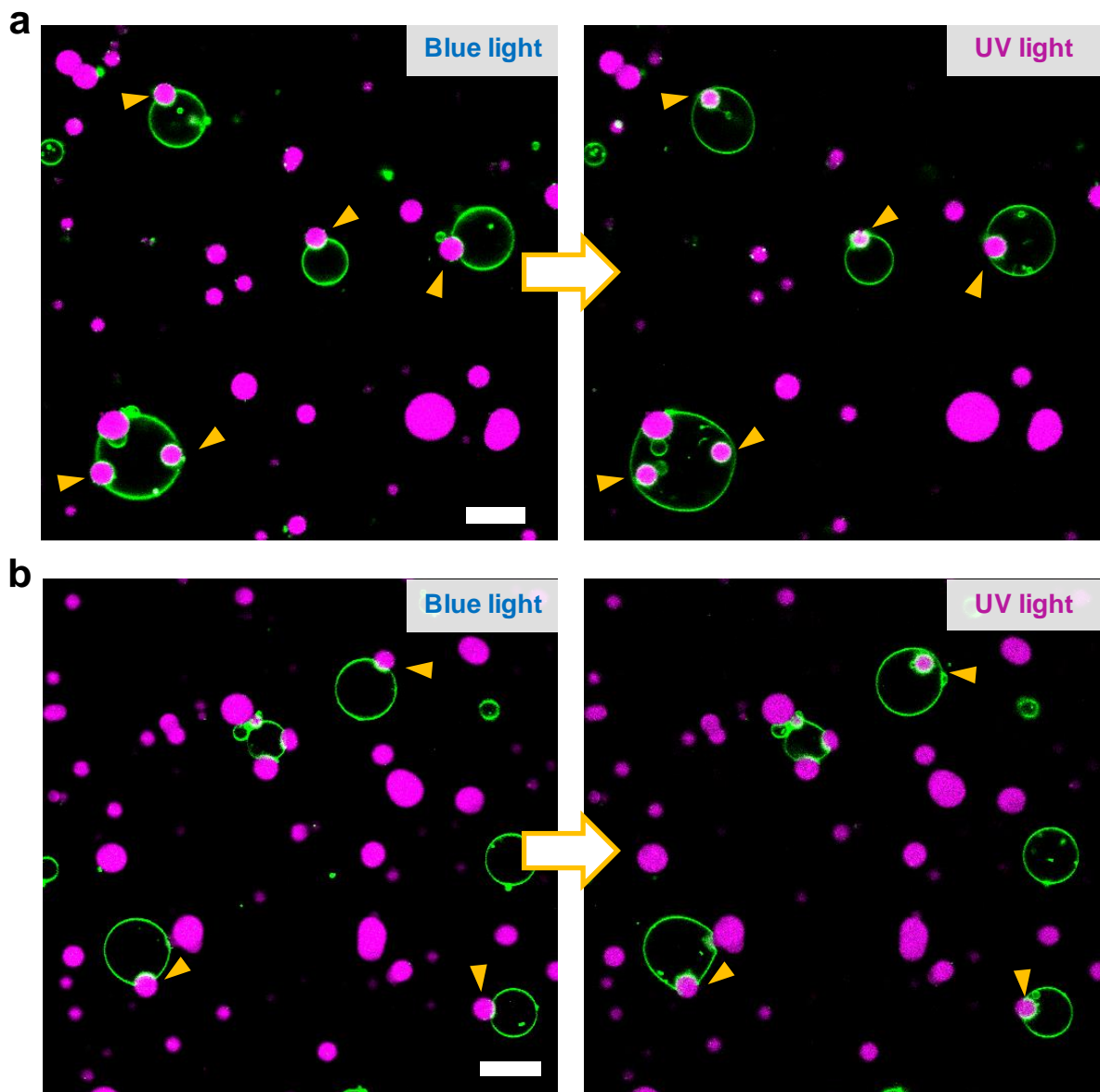


Figure S4. Confocal fluorescence full field images taken under UV/blue light exposure as indicated (see Movie S4 for duration of irradiation). The GUVs are composed of equimolar POPC and azo-PC and labelled with 0.1 mol% Atto-647N-DOPE. The glycine condensates are labelled with 10 μ M SRB. The yellow arrowheads point to the reversibly engulfed condensates, whether partially or fully. Scale bars are 20 μ m.

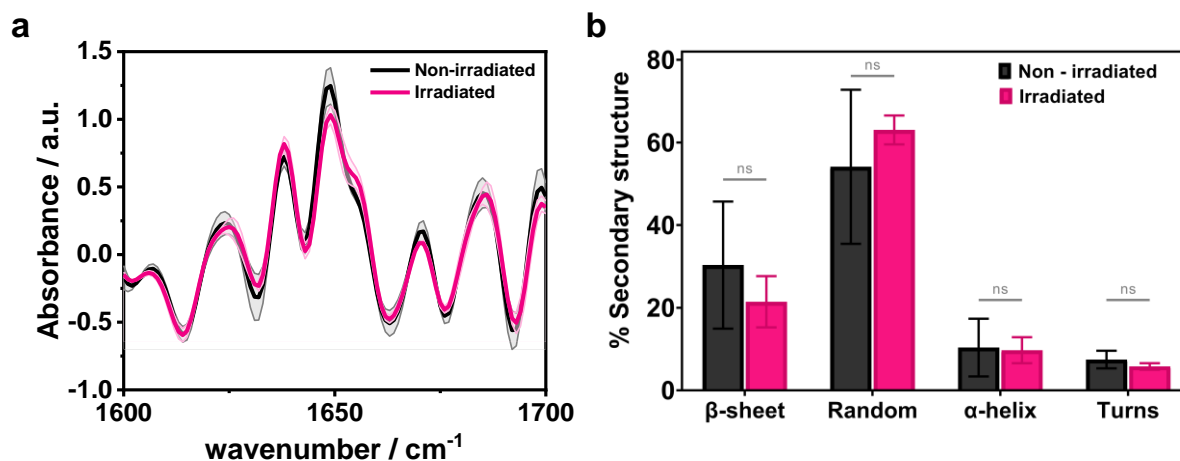


Figure S5. FTIR-ATR analysis of the secondary structure content of glycinin condensates before and after irradiation with UV-light. **a.** Second derivative of glycinin condensates at 150 mM NaCl before and after irradiation with UV-light for 60 seconds (note that much shorter irradiation times were used in the vesicle-condensate studies). **b.** Percent of secondary structure change before and after irradiation with UV-light. There are no significant differences between the irradiated and non-irradiated samples.

Table S1. Full width at half maximum (FWHM) input values in cm⁻¹ and their physically plausible ranges expected for each type of secondary structure as measured with ATR-FTIR.[1]

Secondary structure component		FWHM input (cm ⁻¹)	Lower limit (cm ⁻¹)	Upper limit (cm ⁻¹)
<i>β-sheet</i>	<i>High wavenumber component (1670 – 1680)</i>	9	8	11
	<i>Low wavenumber component (1610 – 1640)</i>	22	11	33
<i>Random (1640 – 1650)</i>		55	50	60
<i>α-helix (1650 – 1660)</i>		20	5	30
<i>Turns (1660 – 1670; 1680 – 1700)</i>		20	5	30

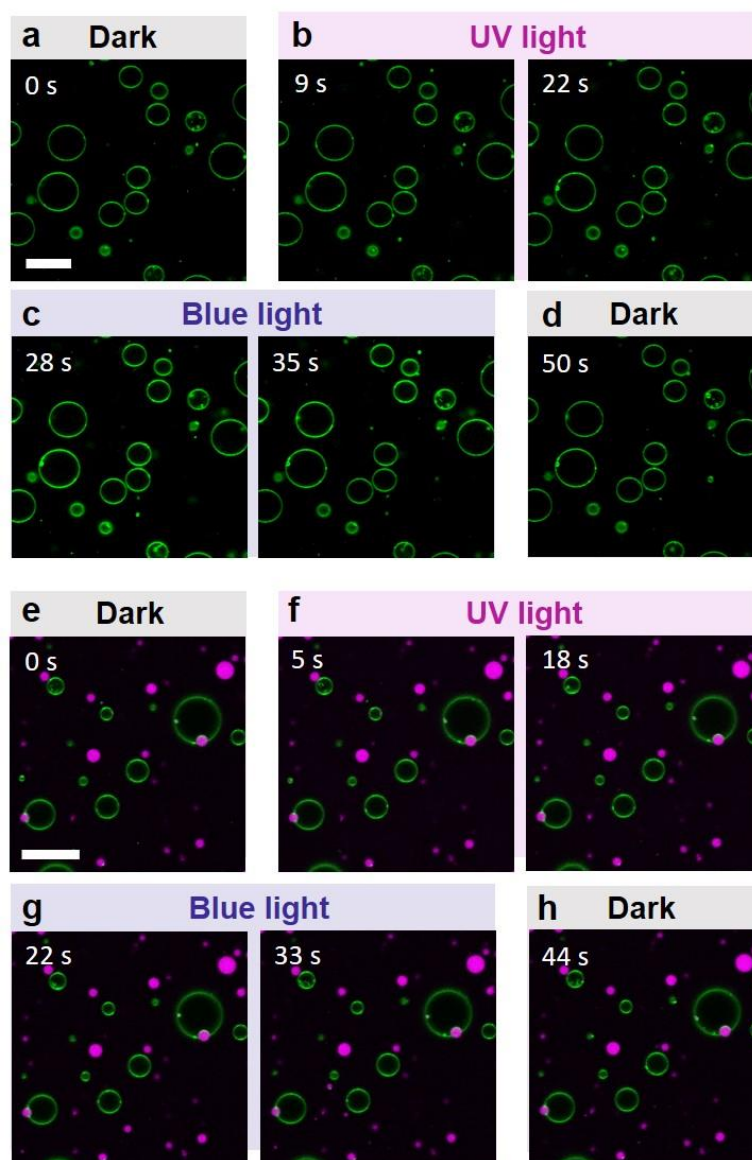


Figure S6. Control experiments with pure POPC GUVs (labelled with 0.1 mol% Atto-647N-DOPE, green) in different irradiation conditions in the absence (a-d) and presence (e-h) of glycinin condensate (labelled with 10 μ M SRB, magenta) demonstrating that UV and blue light irradiation do not induce any alterations in the GUV morphology and the protein-lipid interactions. The GUVs were exposed to UV and blue irradiation in (b, f) and (c, g), respectively. Initial illumination conditions of GUVs in the absence of extra UV or blue irradiation are stated as ‘dark’ in (a, e, d, h). The time stamps show the time in seconds after initiating acquisition. The UV light was turned on at 8 s in (a-d) and 5 s in (e-h), switched to blue at 27 s in (a-d) and 21 s in (e-h). The scale bars in (a) and (e) correspond to 40 μ m. Exposing pure POPC GUVs to UV and blue illumination do not induce any changes in the morphology and the membrane area increase of the vesicles.

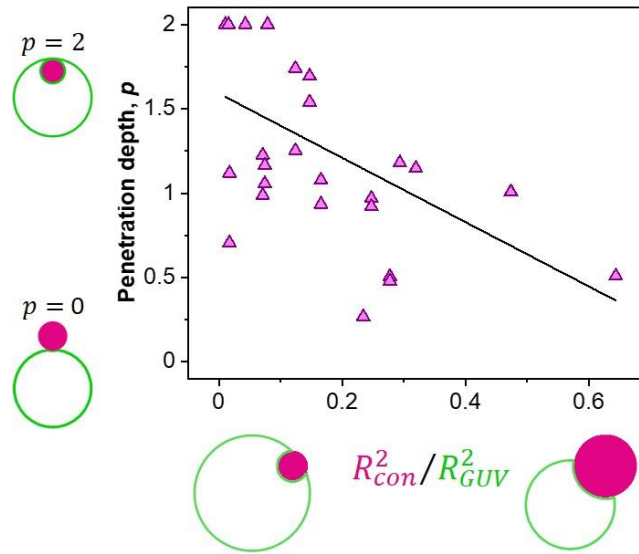


Figure S7. The excess area created upon UV irradiation in larger vesicles leads to higher penetration depth values and smaller condensates penetrate deeper. Alternatively, the larger the condensate is, the more membrane area is required to engulf it and as a result the penetration depth is smaller. To illustrate this, we plot the penetration depth, p , versus the area ratio of the condensate to GUV, $\frac{R_{cond}^2}{R_{GUV}^2}$. The cartoons illustrate various scenarios. The graph displays all penetration depth data under UV light shown in Figure 4 in the main text as a function of the area ratio, $\frac{R_{cond}^2}{R_{GUV}^2}$. The scatter in the data are due to fact that the measurements were done using single confocal cross sections rather than 3D scans that would provide projections for the correct determination of the penetration depth and vesicle and condensate radii as explained in the manuscript. The two sets of data ($n = 30$) are linearly correlated with Pearson correlation coefficient of -0.57 (the solid line is a guide to the eye). Two-tailed test of significance was used and the correlation is significant at the 0.05 level as assessed with Origin Pro software. These results demonstrate that the penetration depth values of protein condensates in GUVs under UV irradiation have a statistically significant correlation to $\frac{R_{cond}^2}{R_{GUV}^2}$, i.e. the increase in excess area resulting from UV irradiation in larger vesicles results in greater penetration depth values, allowing smaller condensates to penetrate more deeply.

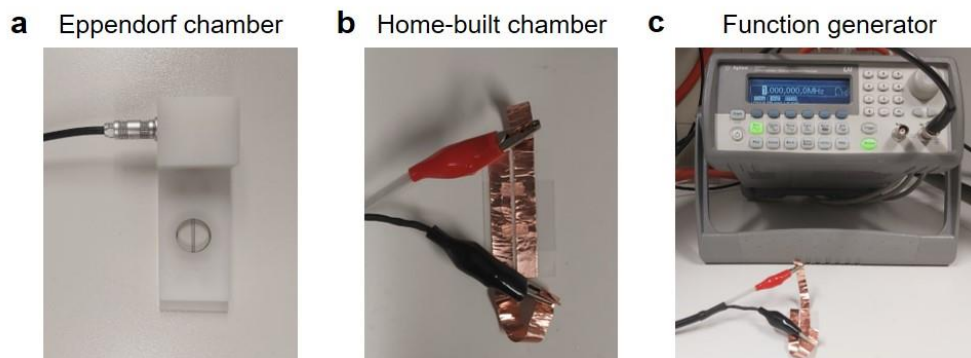


Figure S8: Pictures of electrodeformation chambers before being mounted on a microscope: (a) Eppendorf electrofusion chamber and (b) home-built chamber for electrodeformation assembled from two coverslips sandwiching copper-tape electrodes and parafilm strips. (c) Function generator to apply AC field to induce electrodeformation of GUVs. The two different chambers were used to compare the effects of sample thickness because of concerns regarding the penetration of the UV light.

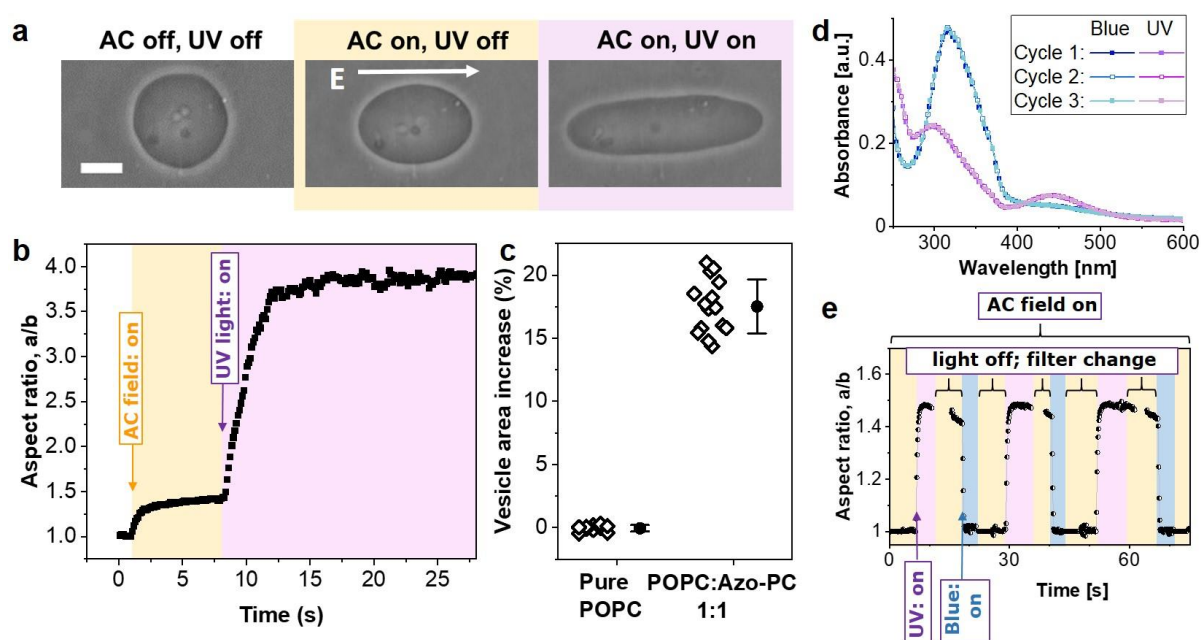


Figure S9: (a) Phase contrast images of a GUV composed of POPC:azo-PC (1:1) in AC field and UV irradiation, as indicated. The arrow indicates the direction of the field. The vesicle was first exposed to an AC field (5 kV m^{-1} and 1 MHz) to pull out thermal fluctuations and deform them into a prolate ellipsoid with semi-axes a and b . Then, while keeping the AC field on, UV irradiation (365 nm) was initiated. Scale bar is $10 \mu\text{m}$. (b) Electrodeformation analysis of the GUV in (a). (c) Quantification of the UV-induced area increase of POPC and POPC:azo-PC (1:1) GUVs via vesicle electrodeformation. 10-15 GUVs per condition were analyzed from 3 separate sets of experiments. Each open diamond represents the result of single GUV analysis while the solid circles and line bars are mean values and standard errors. Azo-PC containing GUVs showed $\sim 18 \pm 2\%$ of area increase under UV illumination. (d) UV/Vis spectra of large unilamellar vesicles made of azo-PC either in *cis* or *trans* state. Multiple irradiation cycles result in overlapping spectra suggesting full reversibility. For clarity, every 5 data point of the spectra in the 2nd and 3rd cycle are displayed. (e) Area increase as a result of azo-PC photoswitching is fully reversible as shown for the degree of deformation under UV and blue light (as indicated in the correspondingly shaded regions for the first cycle) for a vesicle containing 10 mol% azo-PC; data reproduced from [2]. The GUV is continuously exposed to AC-field (5 kV.m^{-1} and 1 MHz).

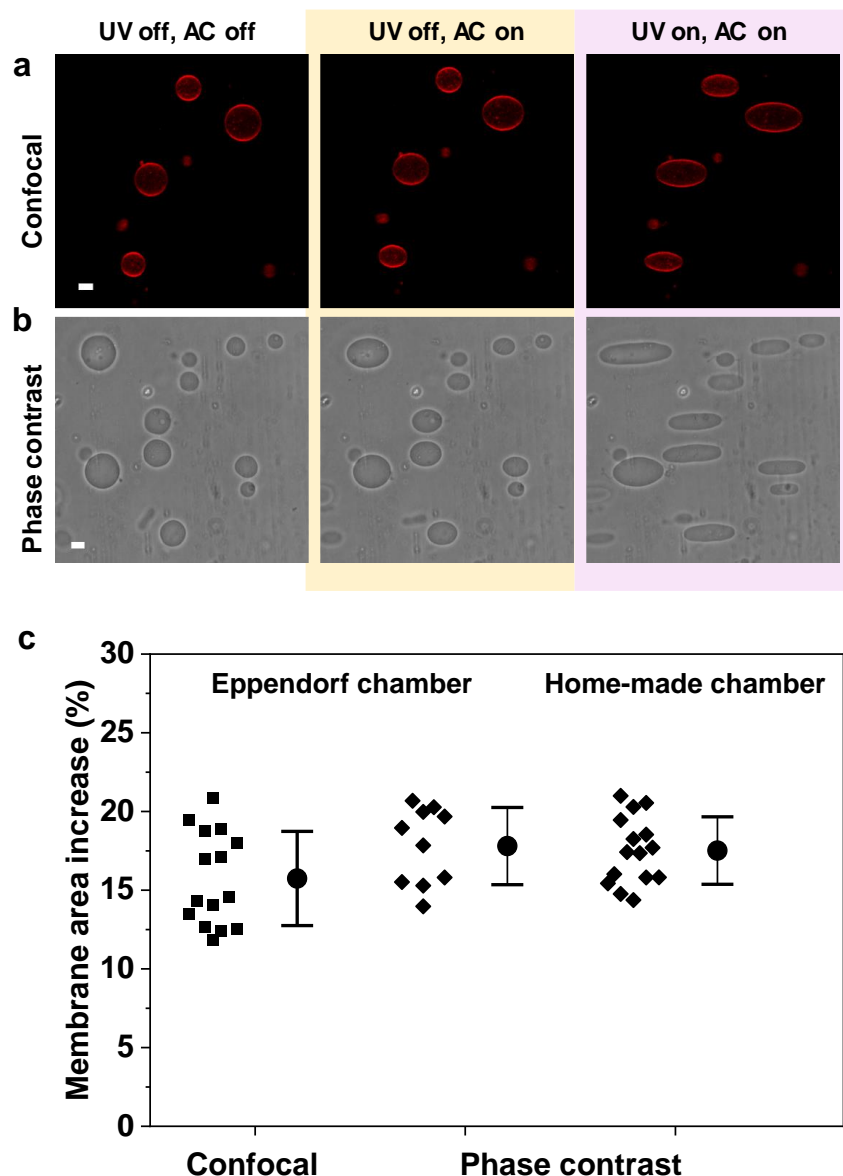


Figure S10. (a) Confocal and (b) phase contrast images of 50 mol% azo-PC containing GUVs during electrodeformation analysis. Initial state of GUVs before the exposure to AC field and UV light is demonstrated on the left panels. The middle panels show the morphology of GUVs in AC field only. In the right panel, GUVs are exposed to UV illumination as well as AC field. In order to monitor vesicles in confocal microscopy, GUVs are labelled with 0.1 mol% Atto-647N-DOPE. The scale bars are 10 μm . Quantification of light-induced membrane area under confocal and phase contrast microscopy based on vesicle electrodeformation. (c) The deformation of the vesicles in AC-field and UV light are measured through the changes in the vesicle aspect ratio. Membrane area of the GUVs are calculated through the area of the ellipsoid. By subtracting the initial membrane area in AC field from the membrane area under the influence of both UV light and AC field, we could obtain the UV induced area increase in the membrane. In addition to different microscopes, the effects of usage of Eppendorf and home-made chambers are also compared. Based on the ANOVA and T-tests (p -values are 0.76 and 0.082, respectively), the differences between different methods are not significant. Each filled square and diamond symbol represents the analysis of a single GUV while filled circles and line bars are the mean values and standard deviation. The average area increase of vesicles under UV illumination shows no dependence on the microscope mode or the used experimental chamber.

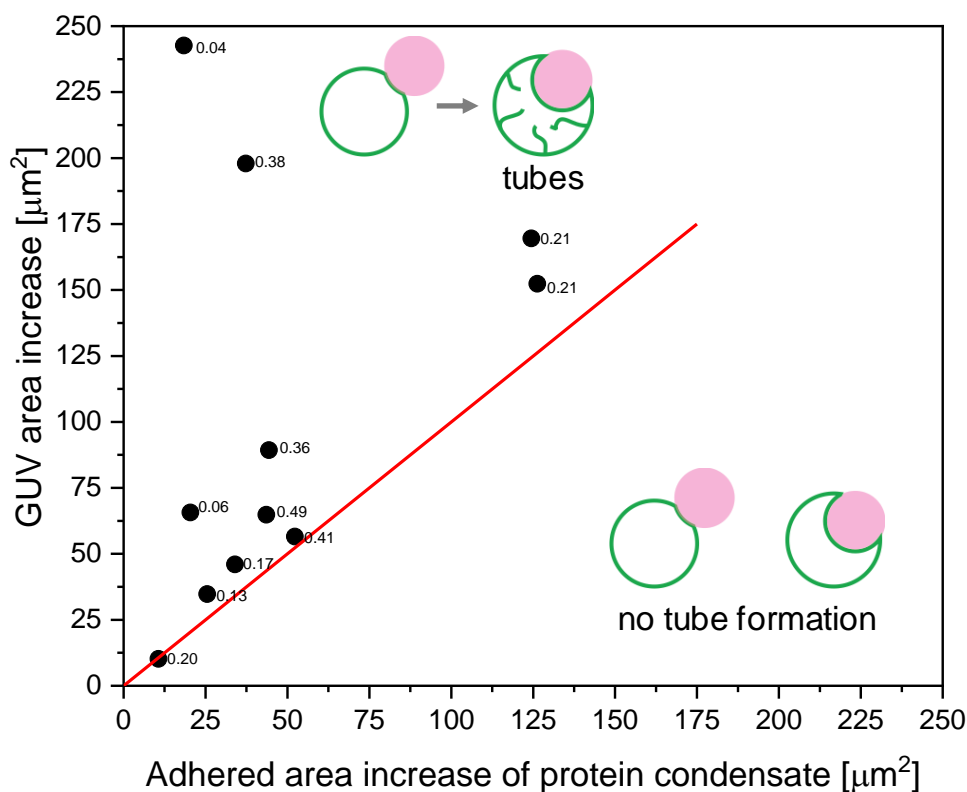


Figure S11. UV-induced GUV area increase versus adhered area increase of the glycinin condensates. GUVs composed of 1:1 POPC:Azo-PC and labelled with 0.1 mol% Atto-647N-DOPE. The adhered area changes detected through confocal screenshots in the absence and presence of UV irradiation were measured through Fiji software. The calculations were based on the spherical cap geometries. Each filled square is an individual data point generated from the pair of interacting GUV-condensate system in which a single vesicle interacted with a single condensate. The quadratic proportionality of the radius of the interacting condensate to the radius of the GUV, $\frac{R_{cond}^2}{R_{GUV}^2}$, were indicated on top of the each datapoint. Red line corresponds to the $y=x$ line representing the data points when all the excess area accumulates on the membrane-condensate interface. The data points are distributed above the $y=x$ line and their distribution does not show any dependence on $\frac{R_{cond}^2}{R_{GUV}^2}$, thus revealing that the adhesion changes are not correlated to size differences of the interacting GUV-protein condensate pairs and that not all UV-induced excess area accumulates at the GUV-condensate interface.

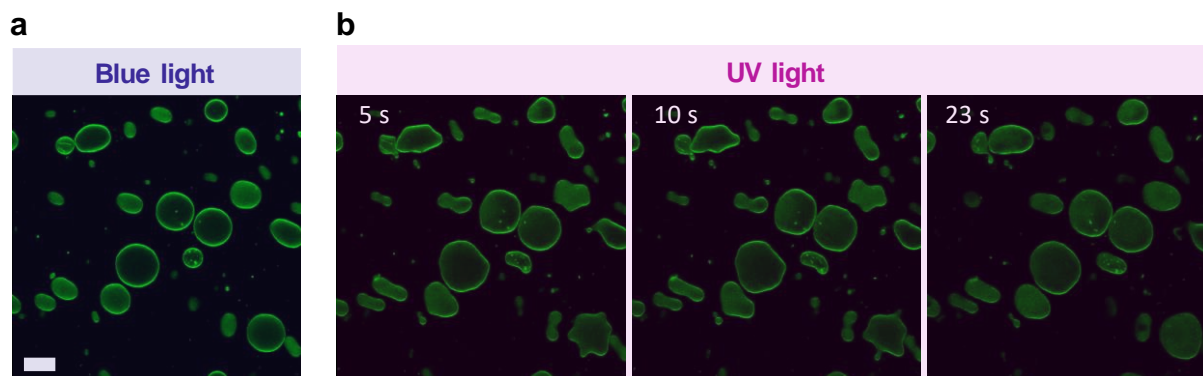


Figure S12. Blue (a) and UV (b) light induced shape transformations of 50 mol% azo-PC containing GUVs in low concentrations of sugar solution and in the absence of any salt asymmetry between internal and external GUV media. GUVs labeled with 0.1 mol% Atto-647N-DOPE were grown in 100 mM sucrose solution and 1:1 diluted to 105 mM glucose solution in absence of any salts. Upon UV irradiation (365 nm), the GUVs underwent complex shape transformations over time which were distinct from the internal tubulation events observed in the presence of high salt asymmetry like in Figure 1c in the main text. The time stamps of changing UV-induced morphological transitions of GUVs are shown in the upper part of the images. The scale bar is same for all these confocal images and corresponds to 10 μm .

Movie Captions

Movie S1: GUVs composed of POPC:Azo-PC 1:1 and labelled with 0.1 mol% Atto-647N-DOPE were sequentially exposed to UV and blue light. The time stamps show the time in seconds after initiating acquisition and switching on the UV and blue light is indicated on the corresponding images. The scale bar is 50 μm .

Movie S2: Photo-switchable partial engulfment of a condensate under UV and blue light as indicated on the upper part of the video. The GUV is composed of POPC:Azo-PC 1:1 and labelled with 0.1 mol% Atto-647N-DOPE and the glycinin condensate was labelled with 10 μM SRB. The time stamps show the time in seconds after initiating acquisition and switching on the UV and blue light is indicated on the corresponding images. The scale bar is 5 μm .

Movie S3: Photo-switchable endocytosis of a condensate. The GUV composed of POPC:Azo-PC 1:1 and labelled with 0.1 mol% Atto-647N-DOPE in contact with the glycinin condensate (labelled with 10 μM SRB) was sequentially exposed to UV and blue light as indicated on the upper part of the video. The time stamps show the time in seconds after initiating acquisition. The scale bar is 5 μm .

Movie S4: Large field confocal image showing several examples of complete and partial condensate engulfment. The GUVs composed of POPC:Azo-PC 1:1 and labelled with 0.1 mol% Atto-647N-DOPE in contact with the glycinin condensate (labelled with 10 μM SRB) were sequentially exposed to UV and blue light as indicated in the corresponding frame of the video. The time stamps show the time in seconds after initiating acquisition. The scale bar is 20 μm .

Movie S5: Release of a completely engulfed condensate in blue light. The GUV composed of POPC:Azo-PC 1:1 and labelled with 0.1 mol% Atto-647N-DOPE were sequentially exposed to UV and blue light. Glycinin condensate was labelled with 10 μ M SRB. The time stamps show the time in seconds after initiating acquisition. The periods of irradiation of the sample are indicated on the upper part of the video. The scale bar is 5 μ m.

Movie S6: Engulfment of multiple condensates in UV light. The GUV composed of POPC:Azo-PC 1:1 and labelled with 0.1 mol% Atto-647N-DOPE was exposed to UV light. Glycinin condensates were labelled with 10 μ M SRB. The time stamps show the time in seconds after initiating acquisition. The periods of irradiation of the sample are indicated on the upper part of the video. The scale bar is 5 μ m. The video was processed with LAS X and Fiji software.

Movie S7: Condensate partial engulfment when exposed to UV light, displaying a large change in the contact angle between the condensate and the membrane. The GUV composed of POPC:Azo-PC 1:1 and labelled with 0.1 mol% Atto-647N-DOPE was exposed to UV light. Glycinin condensate was labelled with 10 μ M SRB. The time stamps show the time in seconds after initiating acquisition. The periods of irradiation of the sample are indicated on the upper part of the video. The scale bar is 5 μ m.

Movie S8: Condensate partial engulfment in UV light. The GUV composed of POPC:Azo-PC 1:1 and labelled with 0.1 mol% Atto-647N-DOPE was exposed to UV light. Glycinin condensate was labelled with 10 μ M SRB. The time stamps show the time in seconds after initiating acquisition. The periods of irradiation of the sample are indicated on the upper part of the video. The scale bar is 5 μ m.

References

- [1] a) E. Goormaghtigh, V. Cabiaux, J.-M. Ruysschaert, *European Journal of Biochemistry* **1990**, *193* (2), 409; b) G. Long, Y. Ji, H. Pan, Z. Sun, Y. Li, G. Qin, *International Journal of Food Properties* **2015**, *18* (4), 763.
- [2] M. Aleksanyan, A. Grafmüller, F. Crea, V. N. Georgiev, N. Yandrapalli, S. Block, J. Heberle, R. Dimova, *Adv. Sci.* **2023**, *10* (31), 2304336.